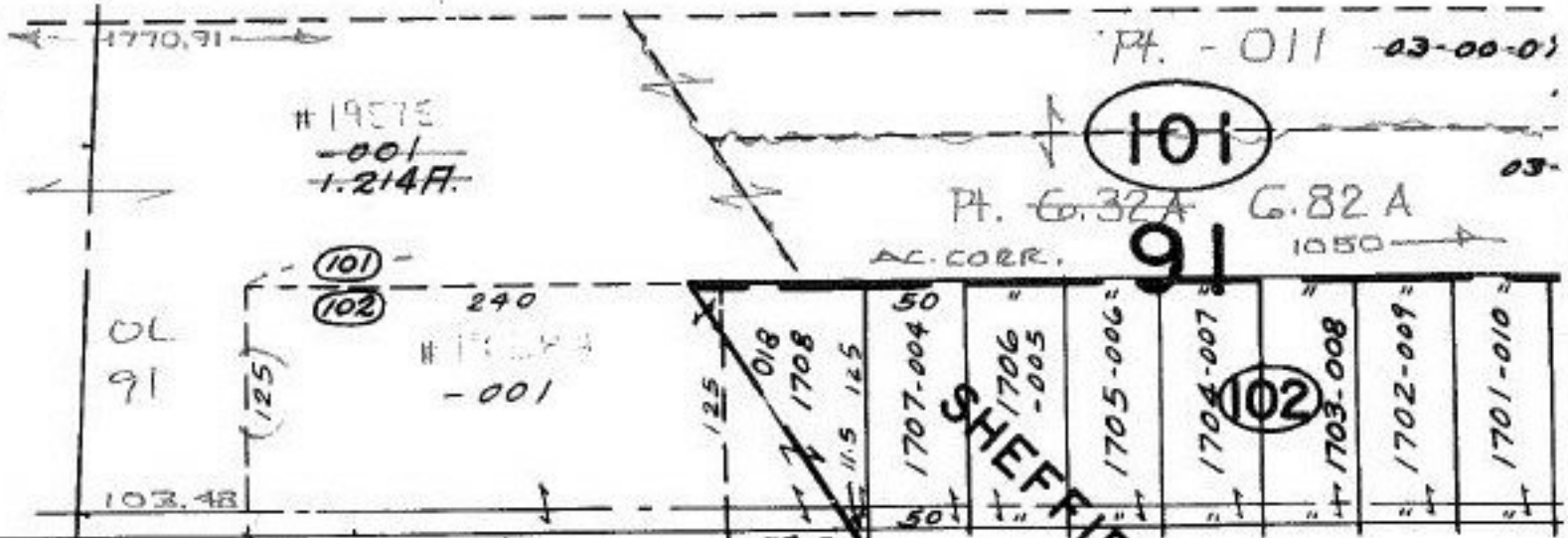


SEE 3-E



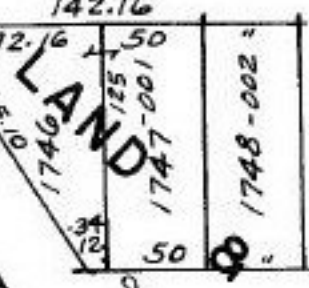
OL 91

OL 97

28th

SHEFFIELD 80

FULTON



03-00-091-101- 03-00-092-101- PRIOR INST. 668/588
 SURVEYED BY: LAUNDON, SIMON, CAHL & ASSOC. C=1:INF.

101

Pt. -027
Pt. 13.71A.

11/8/91
19575

APPROVED
 LORAIN CO.
 MAP DEPT.
 DATE 9-25-91
 PAGE 3-00-097-A
 BY CAROLYN
 FRANCIS
 VOID AFTER # 19575

2

COMBINATION

97-A

570