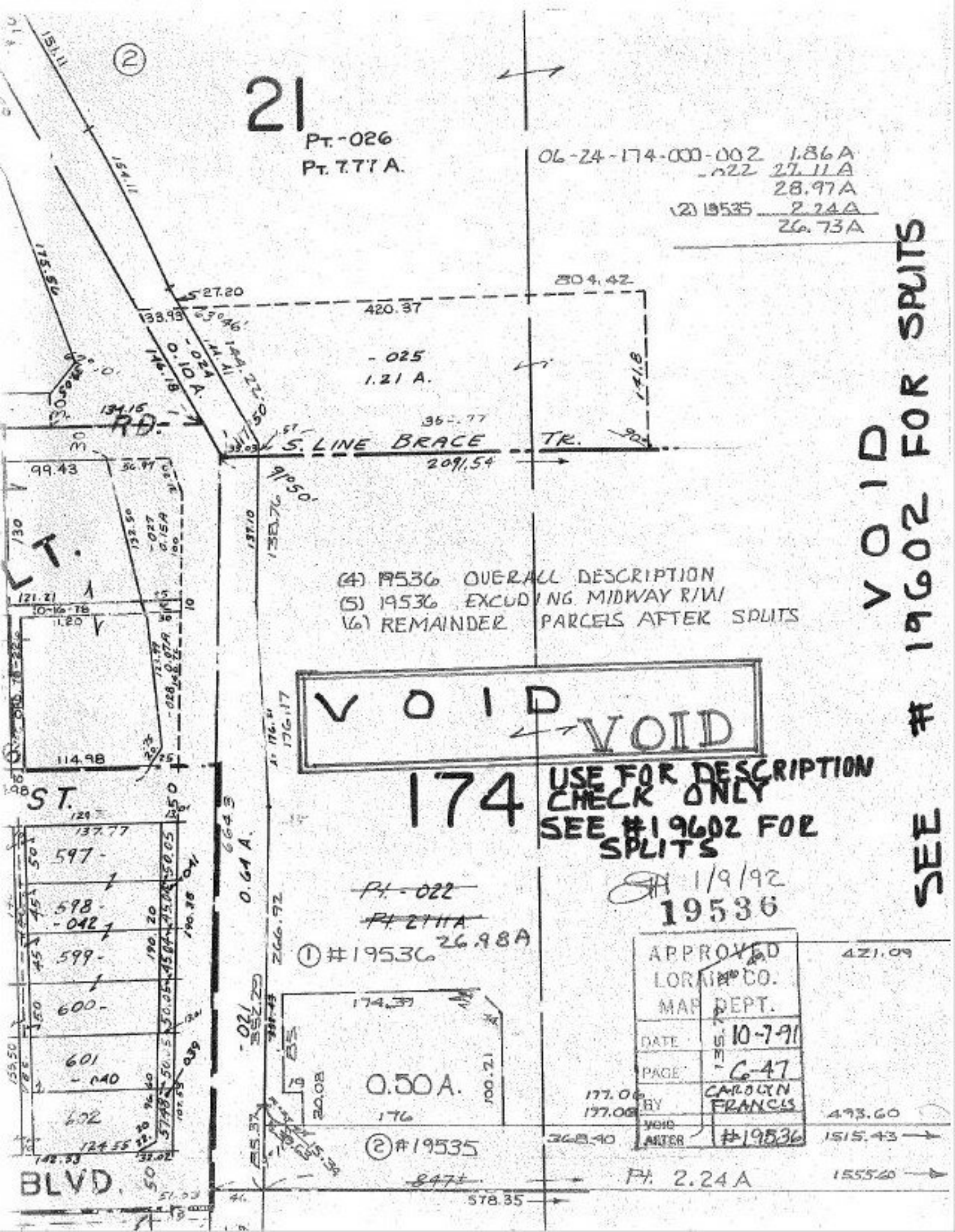


21

PT-026
PT. 7.77A.

06-24-174-000-002	1.86A
-022	27.11A
	28.97A
(2) 19535	2.24A
	26.73A



- 025
1.21 A.

- (4) 19536 OVERALL DESCRIPTION
- (5) 19536 EXCLUDING MIDWAY R/W
- (6) REMAINDER PARCELS AFTER SPLITS

VOID
← **VOID**

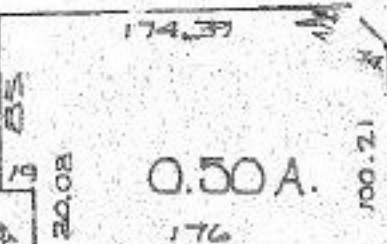
174

**USE FOR DESCRIPTION
CHECK ONLY
SEE #19602 FOR
SPLITS**

~~PT-022~~
~~PT. 2.11A~~
① #19536 26.98A

1/9/92
19536

APPROVED	
LORAIN CO.	
MAP DEPT.	
DATE	10-7-91
PAGE	C-47
BY	CAROLYN FRANCIS
VOID AFTER	#19536



② #19535

PT. 2.24A

**VOID FOR SPLITS
19602
SEE**