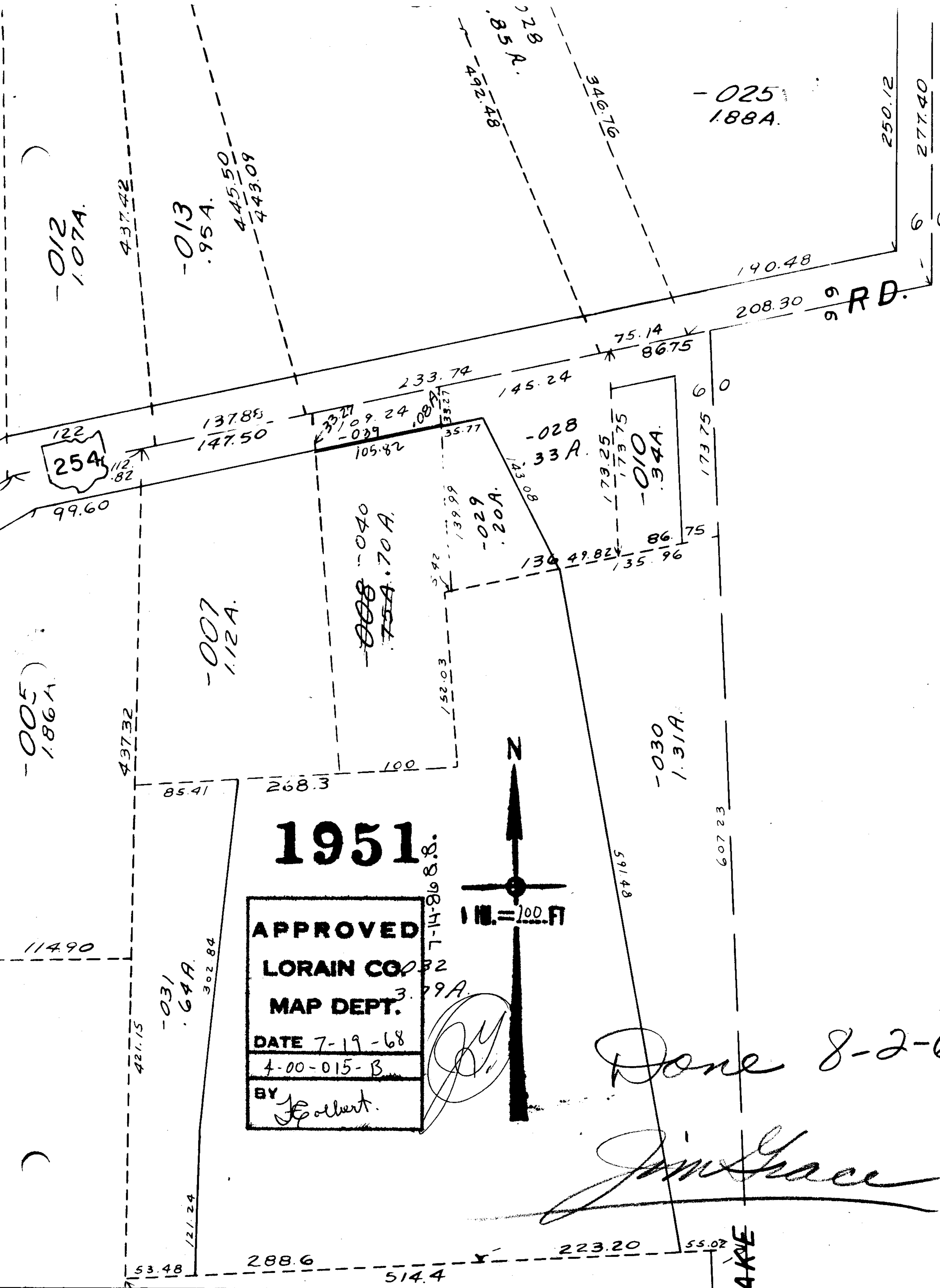


SEE 4-00-015



-012  
1.07A.

-013  
.95A.

-025  
1.88A.

728  
85A.

-005  
1.86A.

-007  
1.12A.

~~008~~ -040  
75A.70A.

-029  
.20A.

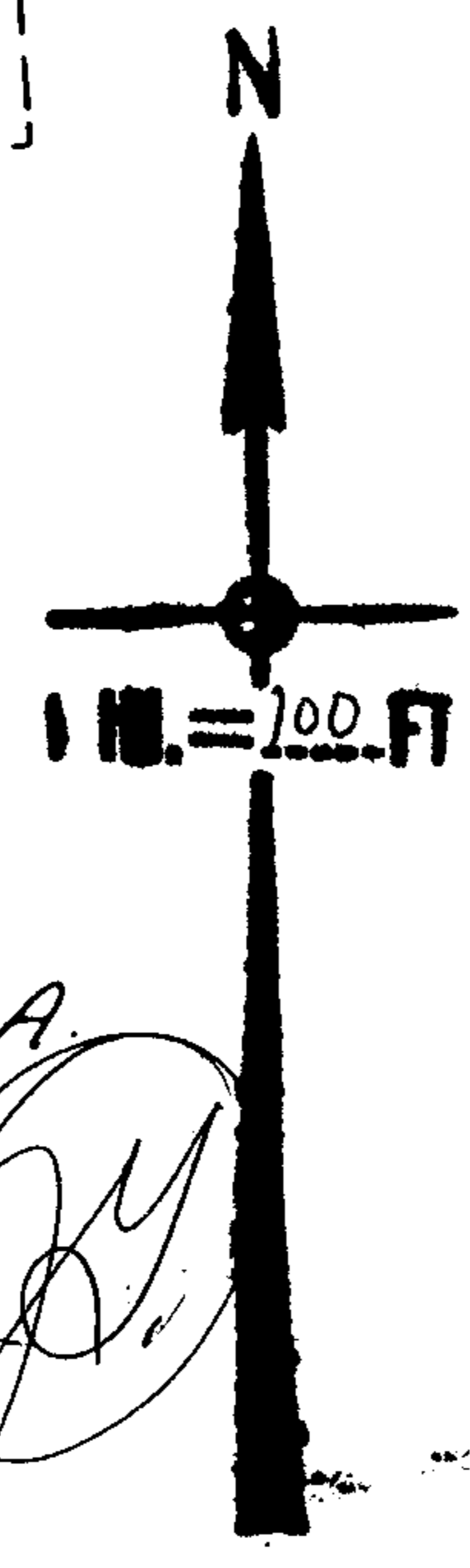
-028  
33A.

-010  
.34A.

-030  
1.31A.

# 1951

**APPROVED**  
**LORAIN CO.**  
**MAP DEPT.**  
 DATE 7-19-68  
 4-00-015-B  
 BY *E. Colbert.*



*Done 8-2-68.*

*Jim Grace*

**AKE**