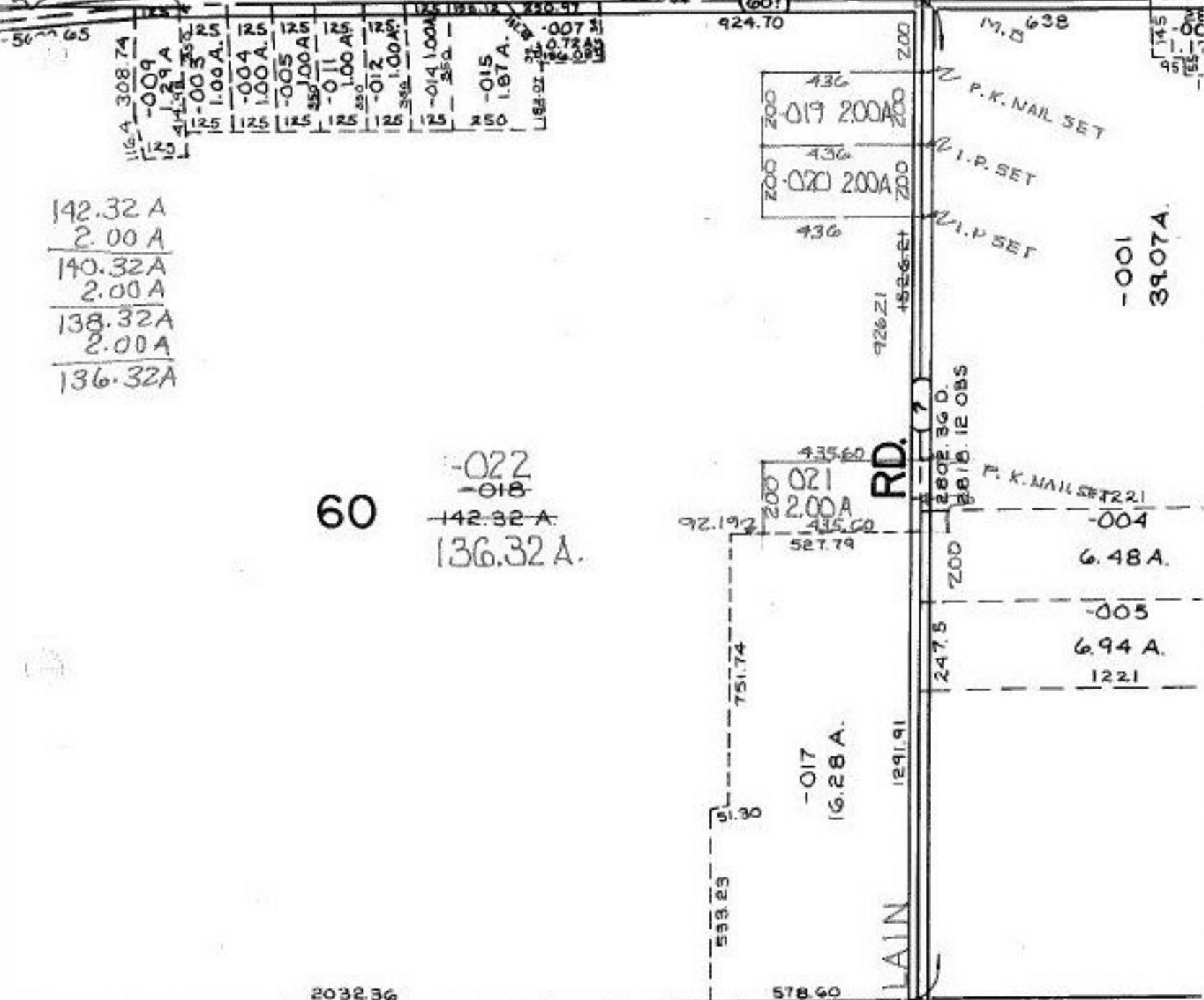


303

WAKEMAN-LAGRANGE - RICHFIELD



142.32 A
 2.00 A
 140.32 A
 2.00 A
 138.32 A
 2.00 A
 136.32 A

60
 -022
 -018
 142.32 A
 136.32 A

436
 -019 200A
 436
 -020 200A

435.60
 021
 2.00 A
 435.60
 527.79

-017
 16.28 A

M.B. 638
 P.K. NAIL SET
 I.P. SET
 I.P. SET

P.K. NAIL SET 221
 -004
 6.48 A.
 -005
 6.94 A.
 1221

-001
 3907 A

RD.
 CHAMBERLAIN

16-00-060-000 PRIOR INST. 246/52
 SURVEYED BY: JOHN R. HAMILTON REG. SURVEYOR
 C=1:INF. INF. INF.

5/4/92
#19467
 APPROVED
 LORAIN CO.
 MAP DEPT.
 DATE 7-9-91
 PAGE 16-E
 BY CAROLYN FRANCIS
 VOID AFTER # 19467

-002
 55.00 A.