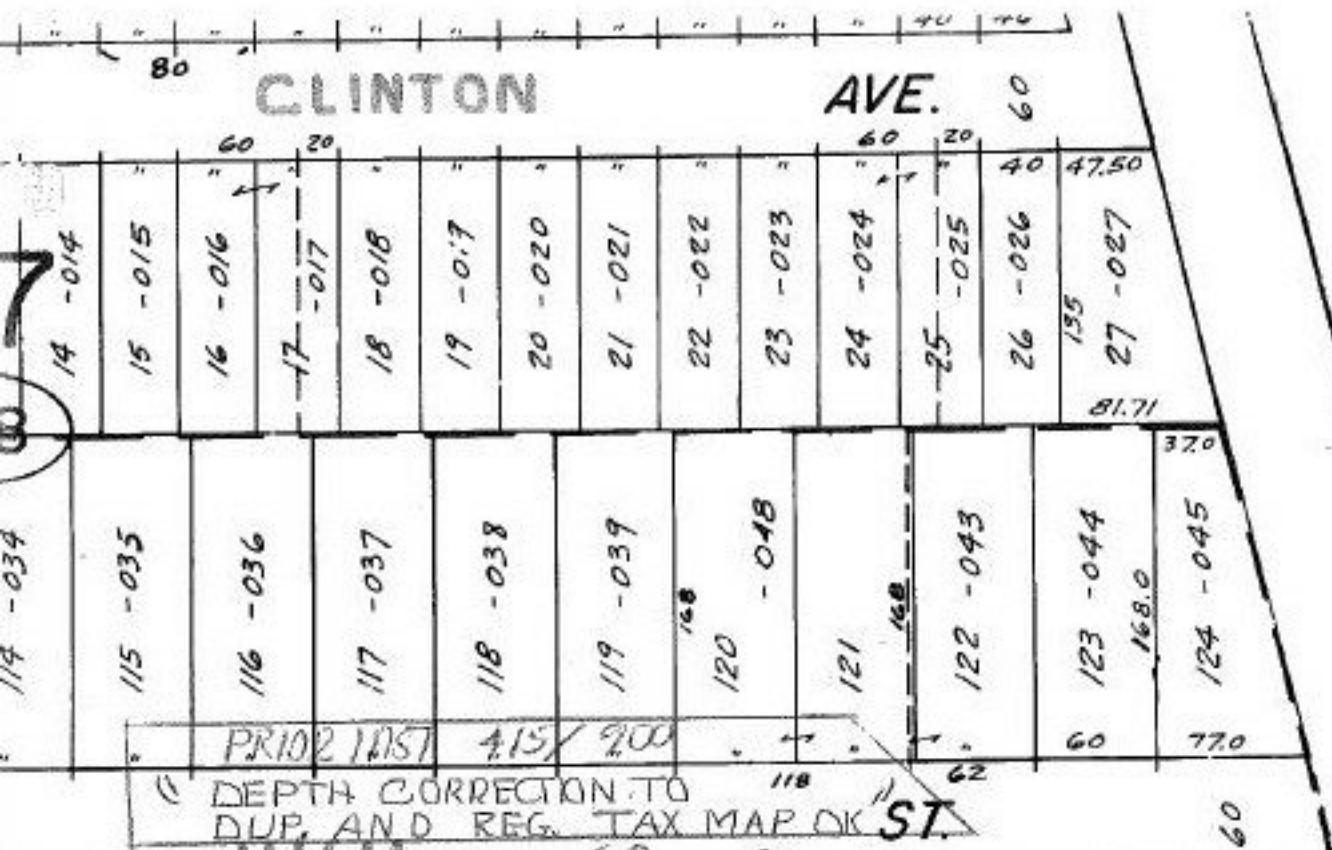
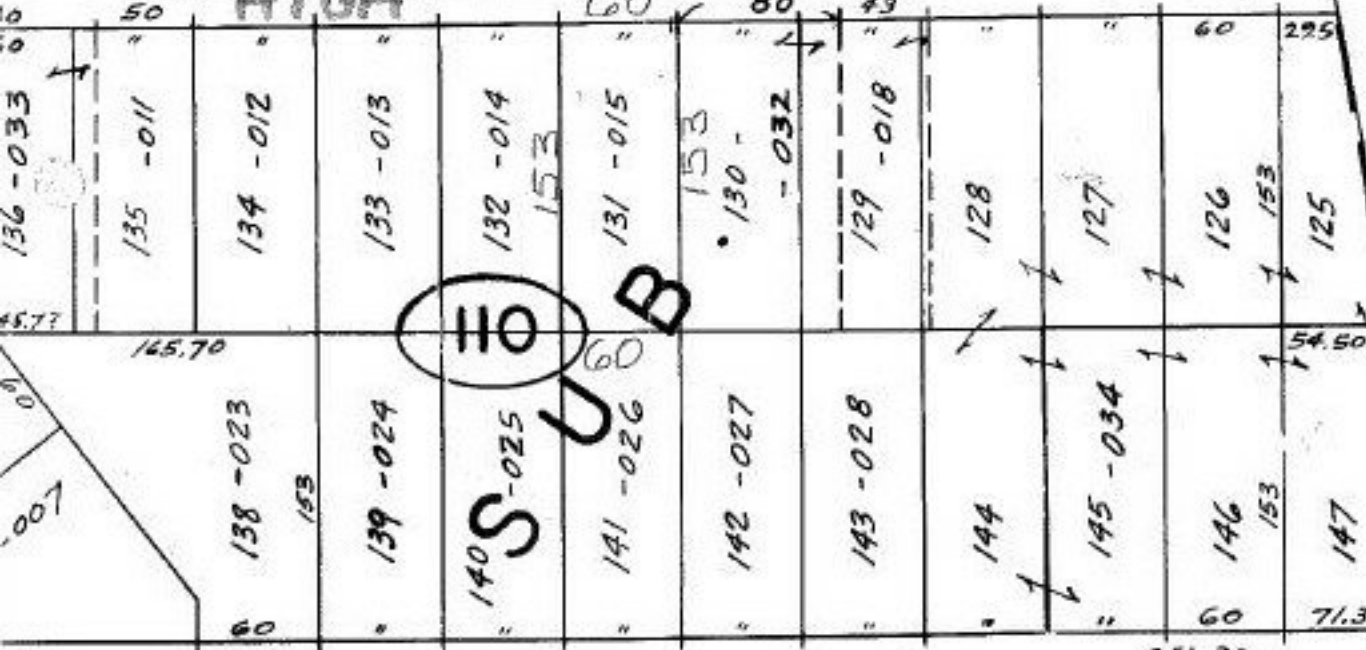


CLINTON

AVE.

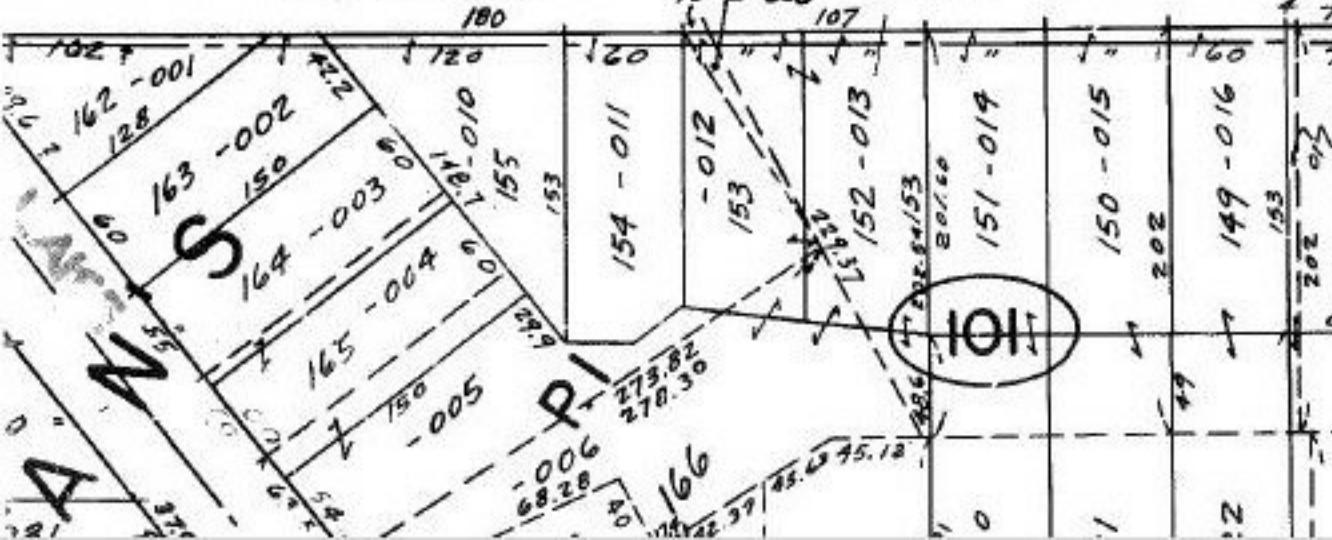


HIGH



WALNUT

ST.



"DEPTH  
DUP. & REG. CORRECTION" ONLY  
06-24-027-110-015

06-24-034-500-018  
Pt. 11.68A.

11/14/92

#19455A

APPROVED  
FRANCIS CO.  
MAP DEPT.  
DATE 7-17-91  
PAGE 6-80  
BY CAROLYN FRANCIS  
AFTER #19455A

70