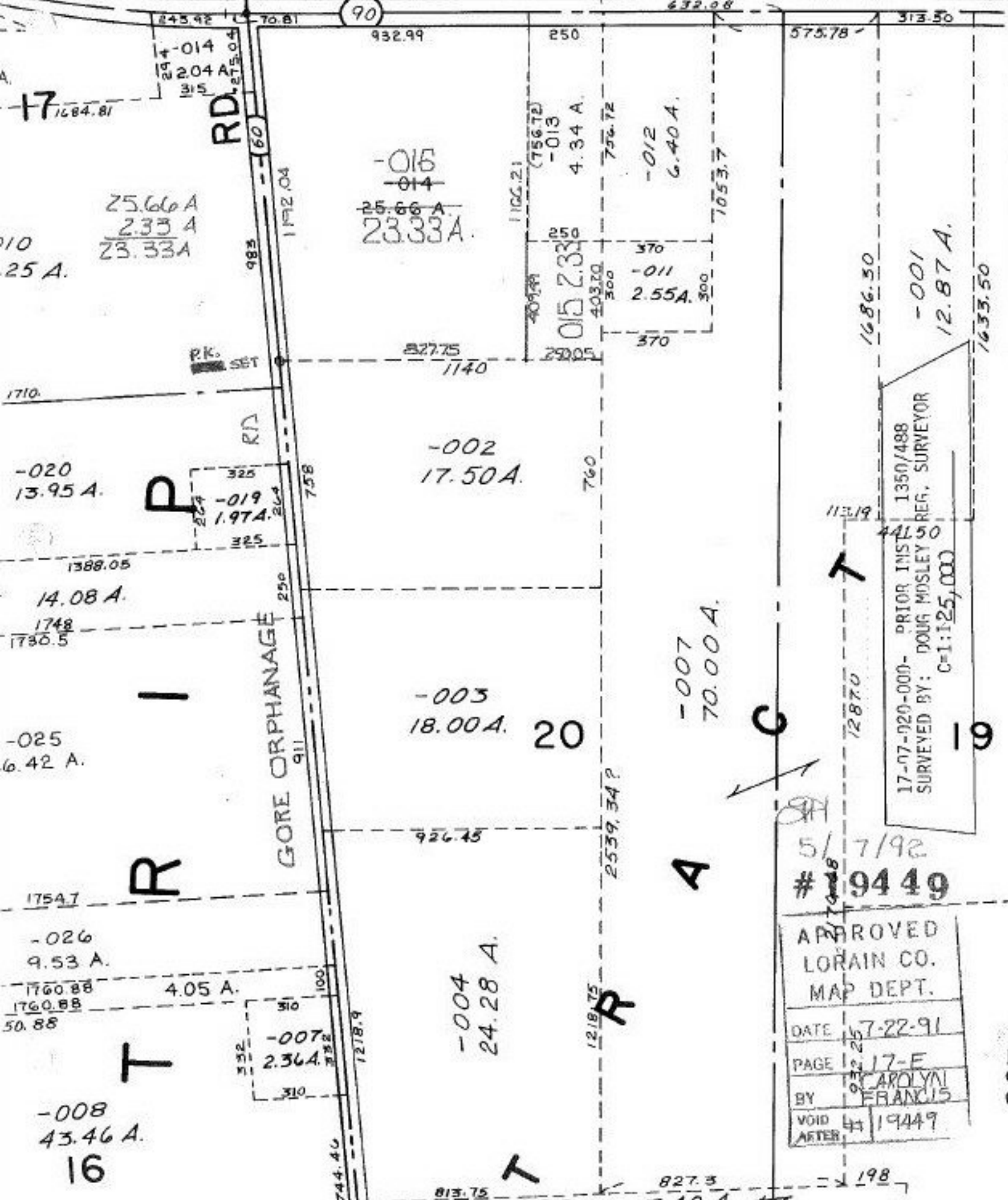


NORWALK

SEE 17-A

MEDINA NORWALK

RD RT. 18



17-07-92-000- PRIORITY INS 1350/488
 SURVEYED BY: DOUG MDSLEY REG. SURVEYOR
 C=1:125,000

5/7/92
 # 9449
 APPROVED
 LORAIN CO.
 MAP DEPT.
 DATE 7-22-91
 PAGE 17-E
 BY CAROLYN FRANCIS
 VOID AFTER 4/19449

17
 1684.81
 25.66 A
 2.33 A
 23.33 A

-020
 13.95 A.

14.08 A.

-025
 6.42 A.

-026
 9.53 A.

4.05 A.

-008
 43.46 A.

-015
 -014
 25.66 A.
 23.33 A.

-002
 17.50 A.

-003
 18.00 A. 20

-004
 24.28 A.

-007
 70.00 A.

-001
 12.87 A.

25 A.

1710

1735.5

1754.7

50.88

16

RD RT. 18
 245.42
 70.81
 90
 932.99
 250
 632.08
 575.78
 313.50

PK. SET

GORE ORPHANAGE

-007
 2.36 A.

T

C

A

R

T

19

198