

12.243 A 1043.19
 2.340 A 120.27

 9.903 A 872.92
 9.90 A 160.00

901.83

1203.19
~~1043.19~~ 872.91
~~872.92~~
~~712.98~~

~~-037~~
~~-033~~
~~12.24 A.~~
 9.90 A.

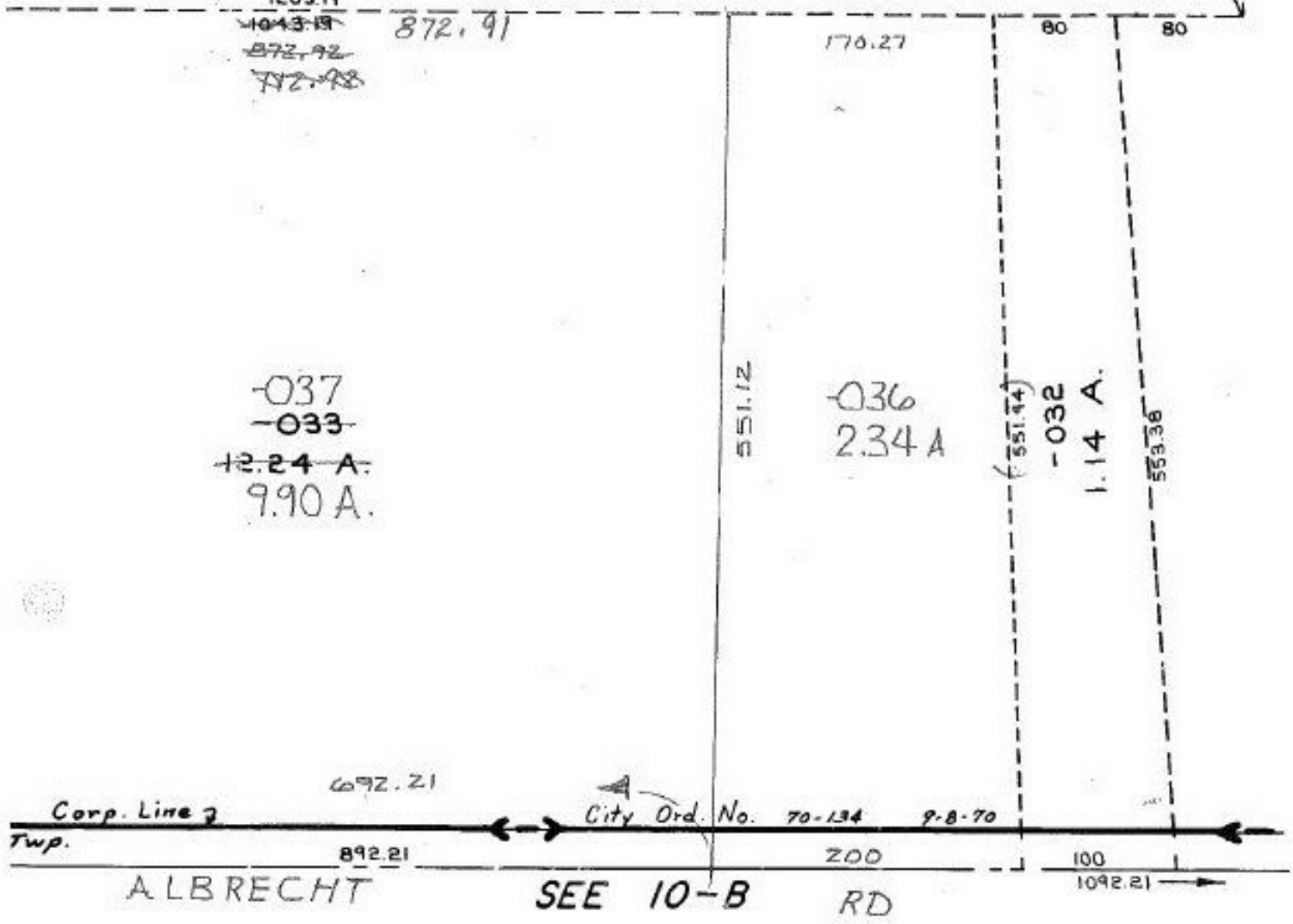
551.12

~~036~~
 2.34 A

(551.44)

~~-032~~
 1.14 A.

553.36



1/15/92
 #19427

APPROVED
 LORAIN CO.
 MAP DEPT.
 DATE 6-12-91
 PAGE 6-130
 BY CAROLYN
 FRANCIS
 VOID
 AFTER #19427

06-24-006-000- PRIOR INST. 1280/523
 SURVEYED BY: K.S.A C-1: 76, 913