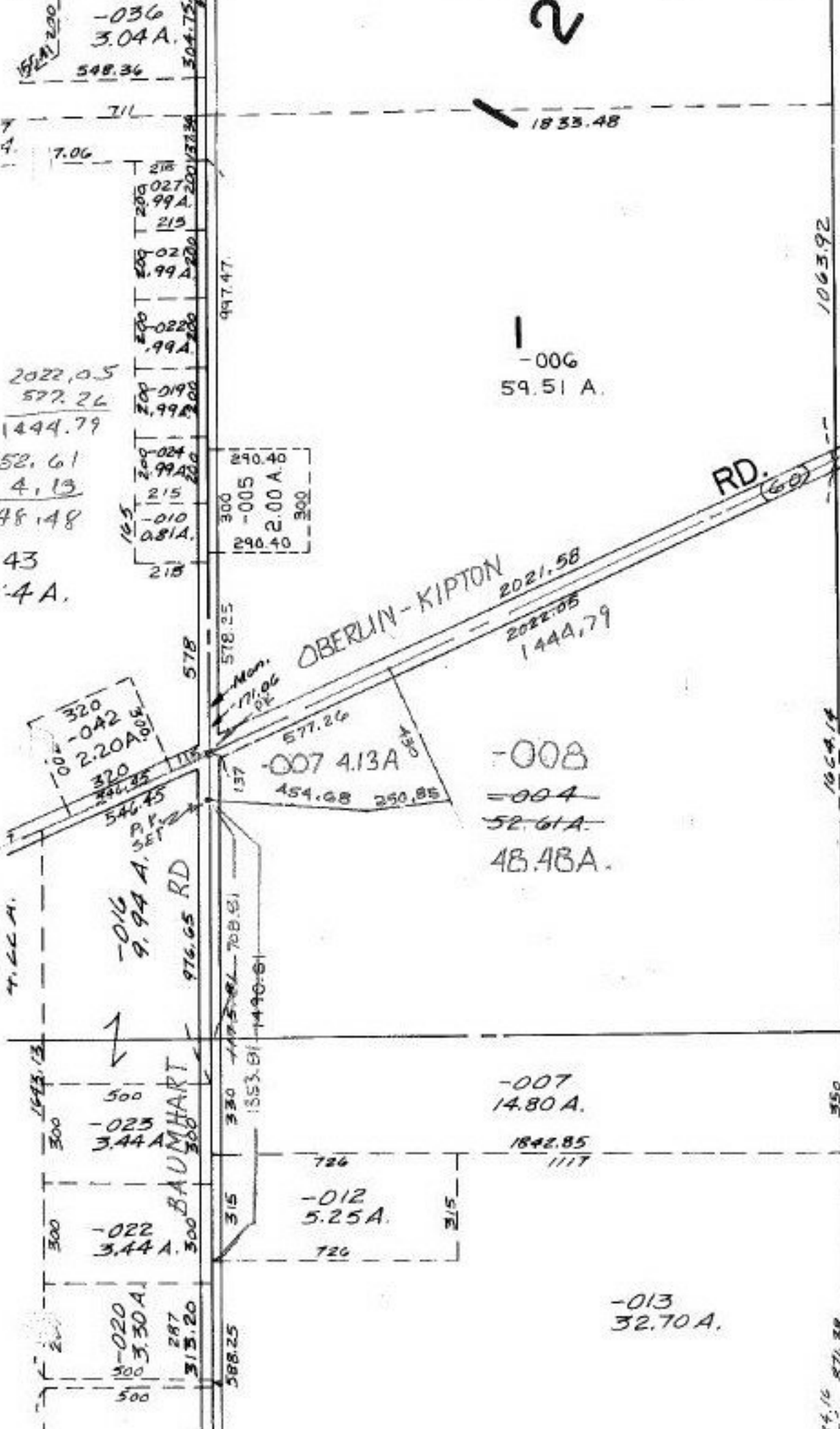


2

SEE 9-E



08-12-001-000- PRIOR INST. 1395/58 C-1: 333 533
 SURVEYED BY: KS ASSOC.

7/23/92

#1942

APPROVED
 LORAIN CO.
 MAP DEPT.

DATE 6-17-91

PAGE 8-14

BY CAEOLYN FRANCIS

VOID AFTER #19426

74.16 874.38
 93