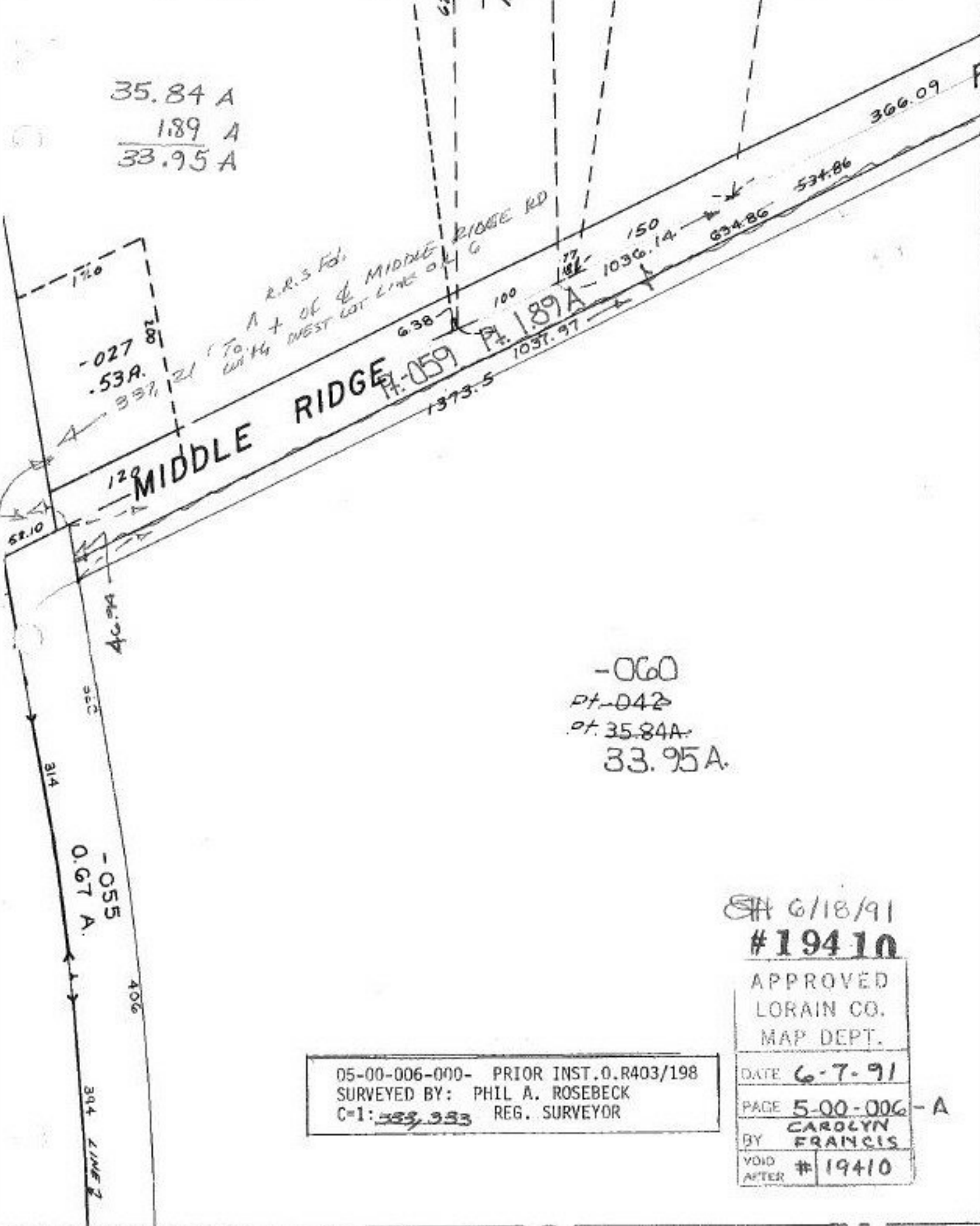


35.84 A
 189 A
 33.95 A



-060
 Pt-042
 Pt. 35.84A
 33.95A

05-00-006-000- PRIOR INST. O.R403/198
 SURVEYED BY: PHIL A. ROSEBECK
 C-1: ~~333,333~~ REG. SURVEYOR

6/18/91
 #19410
 APPROVED
 LORAIN CO.
 MAP DEPT.
 DATE 6-7-91
 PAGE 5-00-006-A
 BY CAROLYN FRANCIS
 VOID AFTER #19410