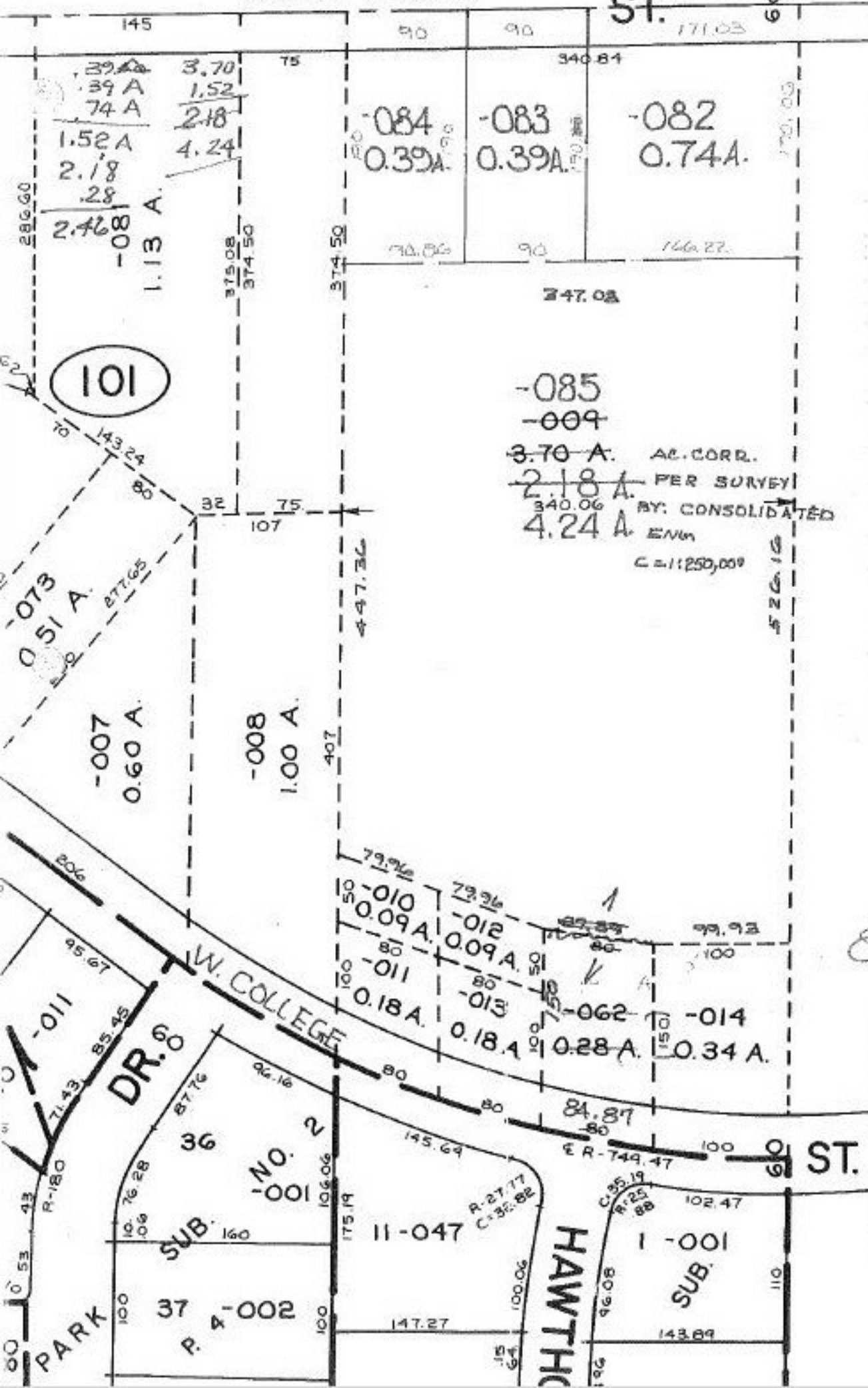


WEST LORAIN

ST. 60



09-00-084-101- PRIOR INST. 456/325  
 SURVEYED BY: CONSOLIDATED ENG.  
 ① C=1:100,000 ② I.N.E. ③ 142,557 (R) 250,000

SH 6/19/91  
 # 19409

APPROVED  
 LORAIN CO.  
 MAP DEPT.  
 DATE 6-10-91  
 PAGE 900-084A  
 BY CAROLYN FRANCIS  
 VOID AFTER # 19409