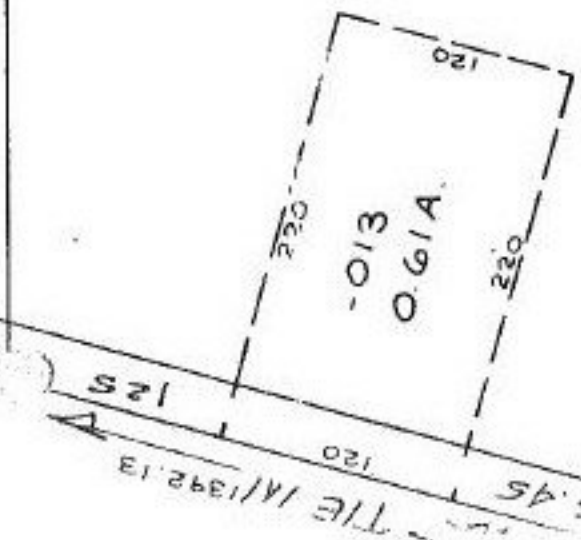


437.50

558.72

704.45

15.82 A
 1.36 A
 14.46 A
 1.90 A
 12.56 A



12-00-075-104- PRIOR INST. 1251/296
 SURVEYED BY: JOHN POZYWAK REG. SURV.
 OC-P.52, 198 @ INF

#19389
 APPROVED
 LORAIN CO.
 MAP DEPT.
 DATE 5-24-91
 PAGE 12-00-075-B
 BY CAROLYN FRANCIS
 VOID AFTER # 19389

REJECT - EXCEEDS F.(1) TO D.(3.S)

438.09 CL

-037
 1.36 A

FRONTAGE
 135'

472 CL

34.02

636.57

-038
 1.90 A

636.57

~~1111.96~~
 1111.96

-032
 3.84 A.

103

6/17/91
 #19402-A

APPROVED
 LORAIN CO.
 MAP DEPT.
 DATE 6/13/91
 PAGE 12-00-075-B
 BY T.M. MAI
 VOID AFTER 19402-A

DELETED
 COMBINATION

130.11

147.60