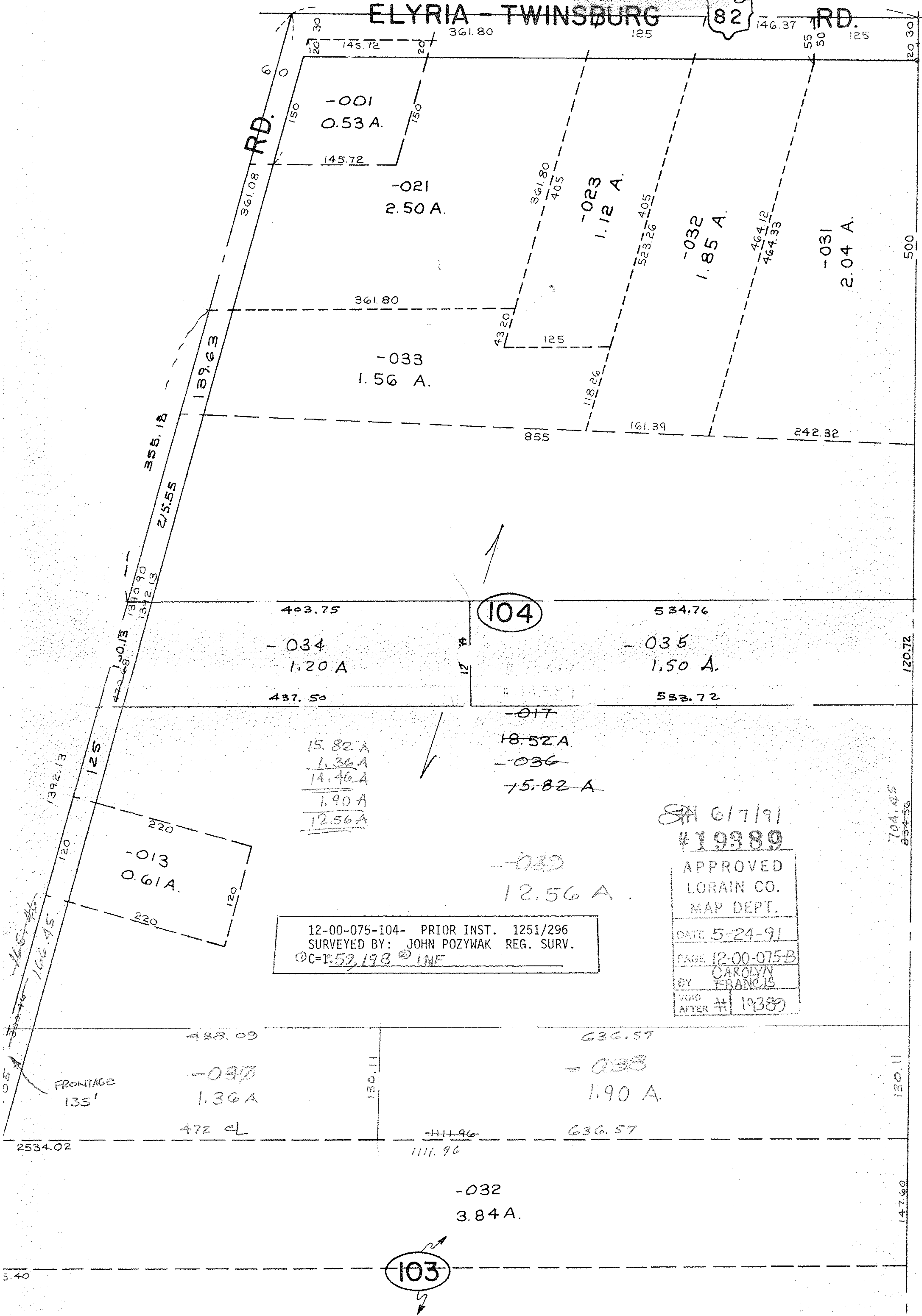


ELYRIA - TWINSBURG



RD.



12-00-075-104- PRIOR INST. 1251/296
SURVEYED BY: JOHN POZYWAK REG. SURV.
©C-1:52,198 © INF

SA 6/7/91
#19389
APPROVED
LORAIN CO.
MAP DEPT.
DATE 5-24-91
PAGE 12-00-075-B
BY CAROLYN
FRANCIS
VOID
AFTER # 19389

103

104

15.82 A
1.36 A
14.46 A
1.90 A
12.56 A

18.52 A
15.82 A
12.56 A

FRONTAGE
135'