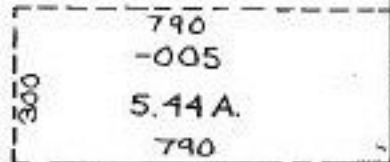


R

3995±

29164.21

2318.96

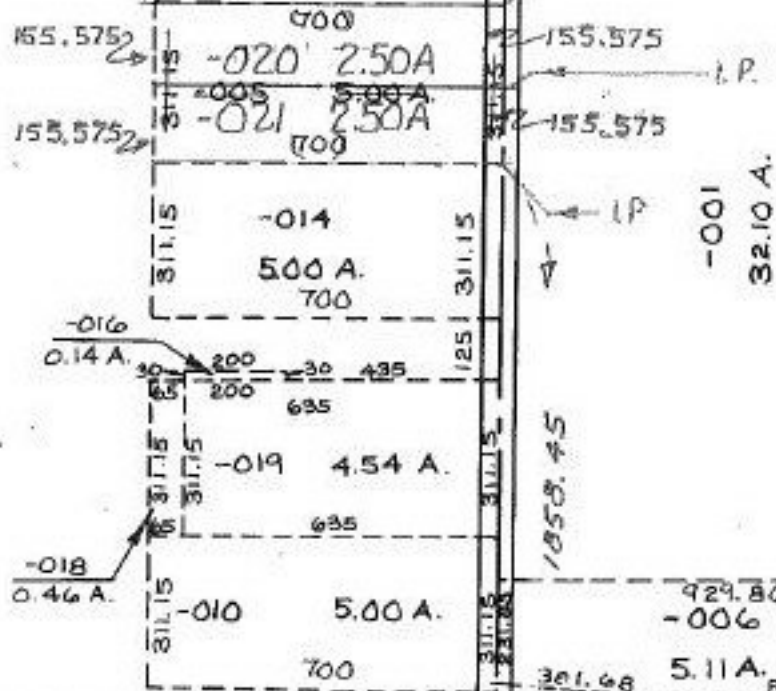


-00
8.96

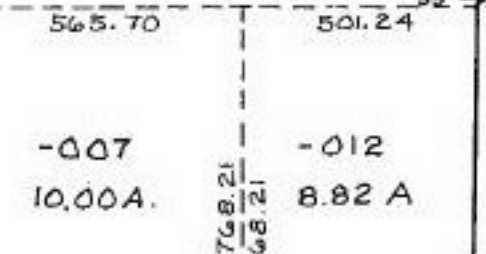
200 A

-017
95.98 A.

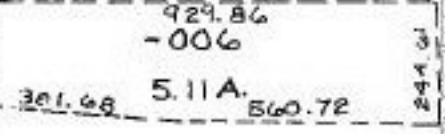
23



-001
32.10 A.



WEST RD.



24.98
35

459.98

339.98

120

987.75

398.25

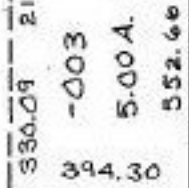
NEW LONDON
EASTERN RD.

-007
12.43 A.

-010
9.00 A.

4

-004
30.75 A.



5/29/91
#19381

APPROVED
LORAIN CO.
MAP DEPT.

DATE 5-21-91

PAGE 21-H

BY CAROLYN FRANCIS

VOID AFTER # 19381

21-17-023-000 PRIOR INST. O.R. 143/
196
SURVEYED BY: KS ASSOC. C=1:INF.

PRIOR INST O.R. 378/622