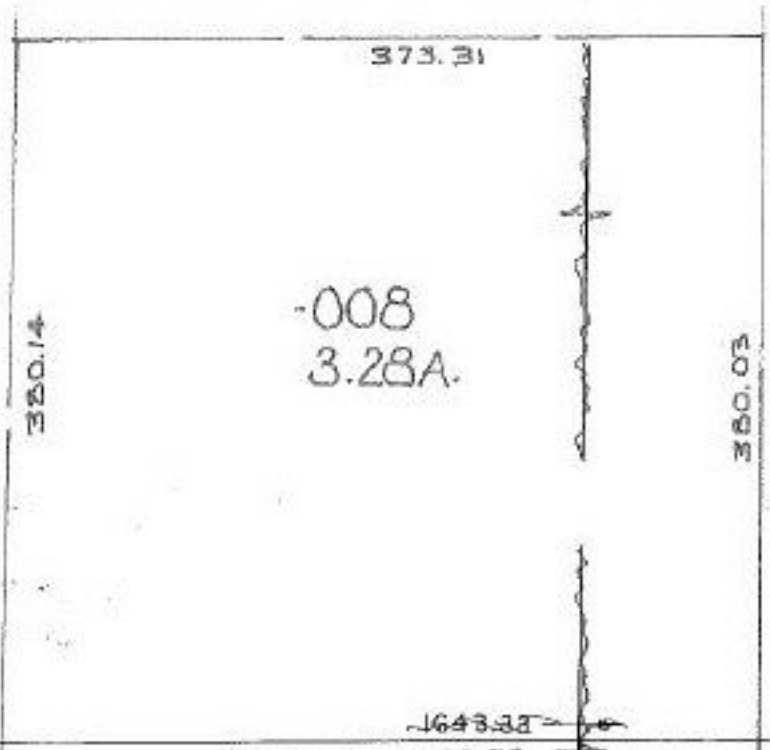


Pt. ~~009~~  
~~004~~  
~~59.88 A.~~  
Pt. 56.60A.



625.87



RD.

SP 5/29/91  
#19352

21-17-011-000- PRIOR INST. O.R. 353/590,594,598  
SURVEYED BY: FREDERICK H. BOREMAN REG. SURV.  
C=1:500,000.

APPROVED  
LUNAIN CO.  
MAP DEPT.

DATE 5-14-91

PAGE 21-17-011- A

BY CAROLYN  
FRANCKIS

VOID AFTER #19352