

ELYRIA MILAN HWY
WAYU 930.78
SILIN 930.33

MILAN ELYRA RD

-025
22.00 A.

R.R. SPR. FD
0.4. 72

- ① 23.00 A
10.87 A
- ② 12.13 A
8.20 A

3.43 A
6.19 A LG CORR

-011
56.00 A.

- ③ 72 6.19 A
73 44.87 A

51.00 A 26.50 A

- ④ 8.19 A ⑤ 5.01 A

42.87 A 21.49 A

- ⑥ 8.19 A ⑦ 5.12 A

34.68 A 16.37 A

- ⑧ 8.18 A ⑨ 5.11 A

26.50 A 11.26 A

AD CORR 13.68 A

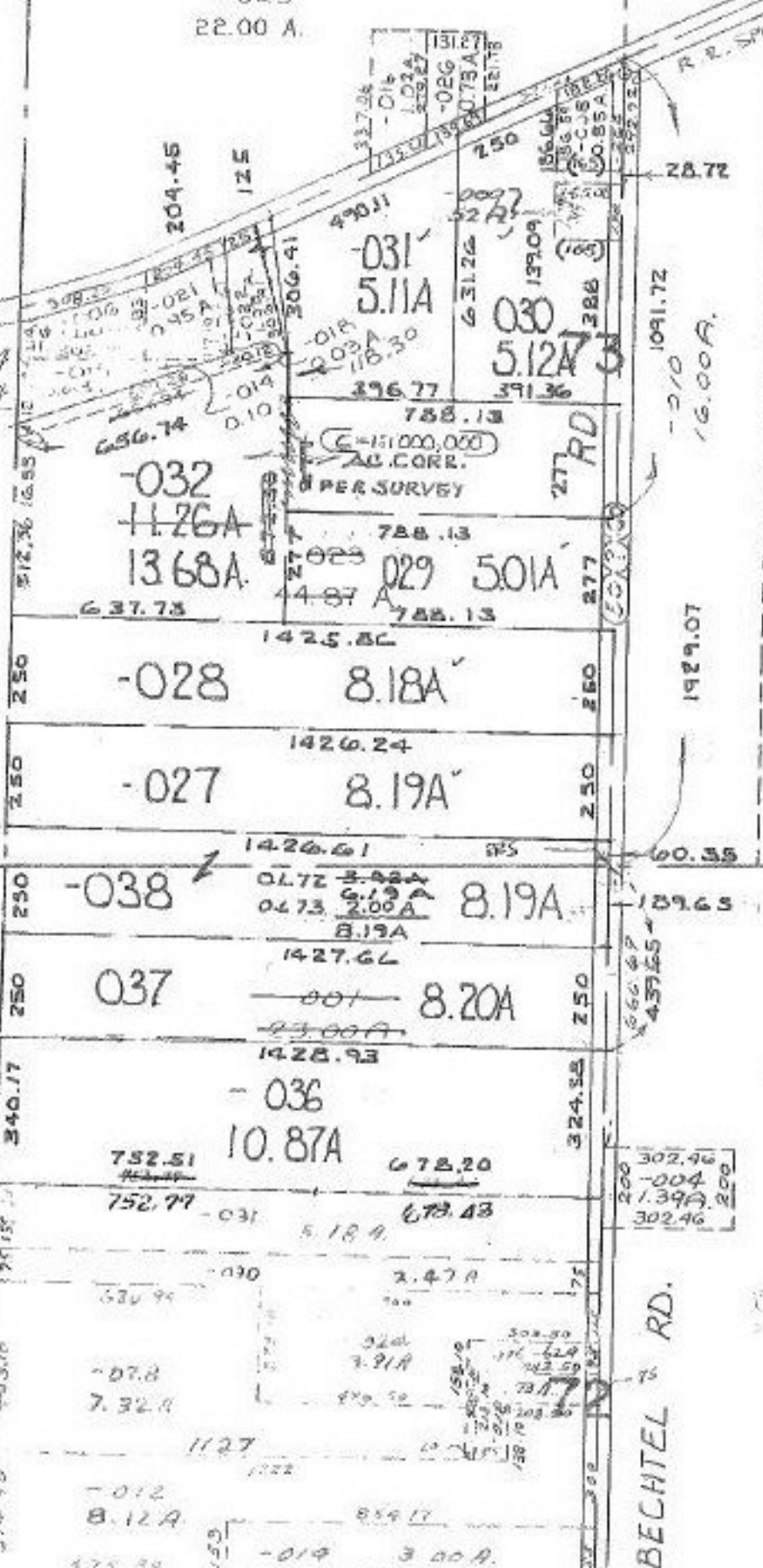
OL 72

6/4/91
#19348

APPROVED
LORAIN CO.
MAP DEPT.
DATE 5-6-91
PAGE 5-H
BY C.E. FRANCIS
VOID AFTER 19348

-005
5.00 A.

BECHTEL RD.



657.34
656.74
0.60

-032
11.26A
13.68A

-028 8.18A

-027 8.19A

-038 8.19A

037 8.20A

-036 10.87A

752.77 -031 5.18A

-078 7.32A

-012 8.12A

-019 3.00A

1091.72
16.00A

1929.07

666.47
437.55

302.46
1.39A
302.46

-005
329

-004
1.50A

2481.0

CA