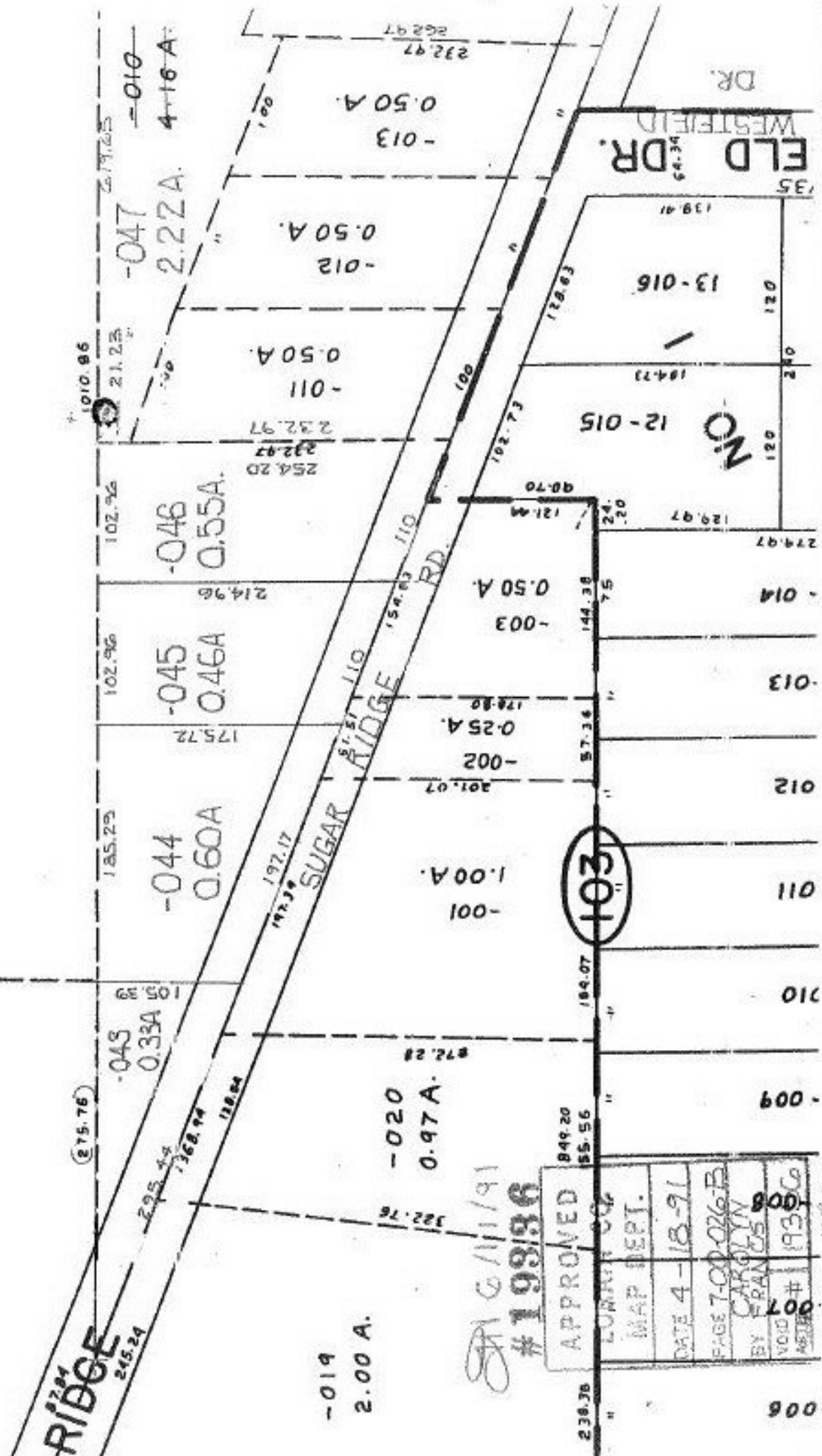


07-00-026-101- PRIOR INST. 1350/798 C-1: 142,887
 SURVEYED BY: KS ASSOC. C-1: 65,555 @ 185,000

- ① 0.23
 - ② 0.60
 - ③ 0.46
 - ④ 0.55
 - ⑤ 2.82
 - ⑥ 4.16A
- 009
 2.41 A.



APPROVED
 LURRY CO.
 MAP DEPT.
 DATE 4-18-91
 PAGE 7-00-026-B
 BY CAROLYN
 VOID # 19306
 # 007
 008

19996
 6/11/91