

267.28  
.002

264

15.25  
~~14.98~~ 14.64  
~~14.19~~ 13.94  
~~13.49~~ 13.24

-036  
1.22 R.

272.50  
272.50

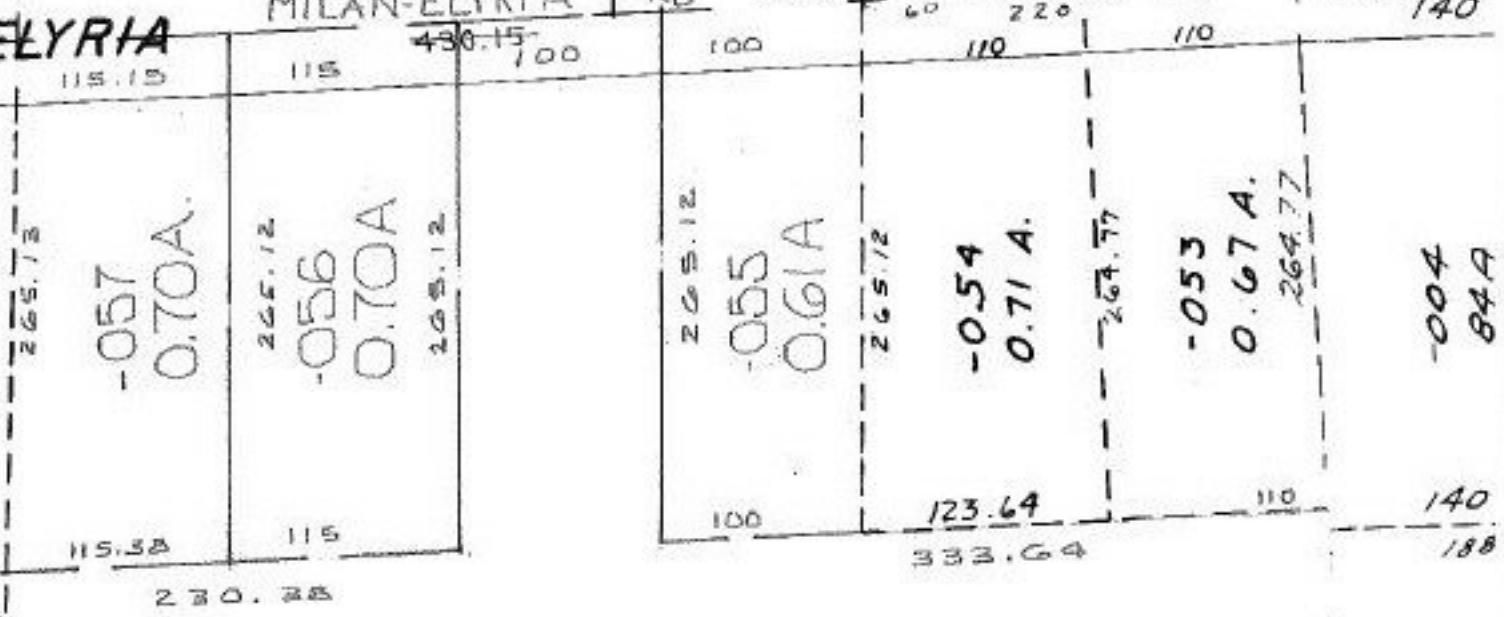
-038  
0.56 A.

82.5  
AN - ELYRIA

MILAN-ELYRIA RD

SR. 113

RD. 140



1076.14  
11.01

-058  
~~050~~  
15.25 A.  
~~13.49 A.~~  
13.24 A

6/4/91  
#19317

APPROVED	85330
LORAIN CO.	
MAP DEPT.	
DATE 3-27-91	
PAGE 5-00-010-A	
BY CAROLYN	
FRANCIS	
VOID AFTER #	19317

05-00-010-102- PRIOR INST. 365/56  
 SURVEYED BY: McGLINCHY & ASSOC.  
 (1)(2) C=1:INF. (3) C=1:333,333

102

-04  
3.7