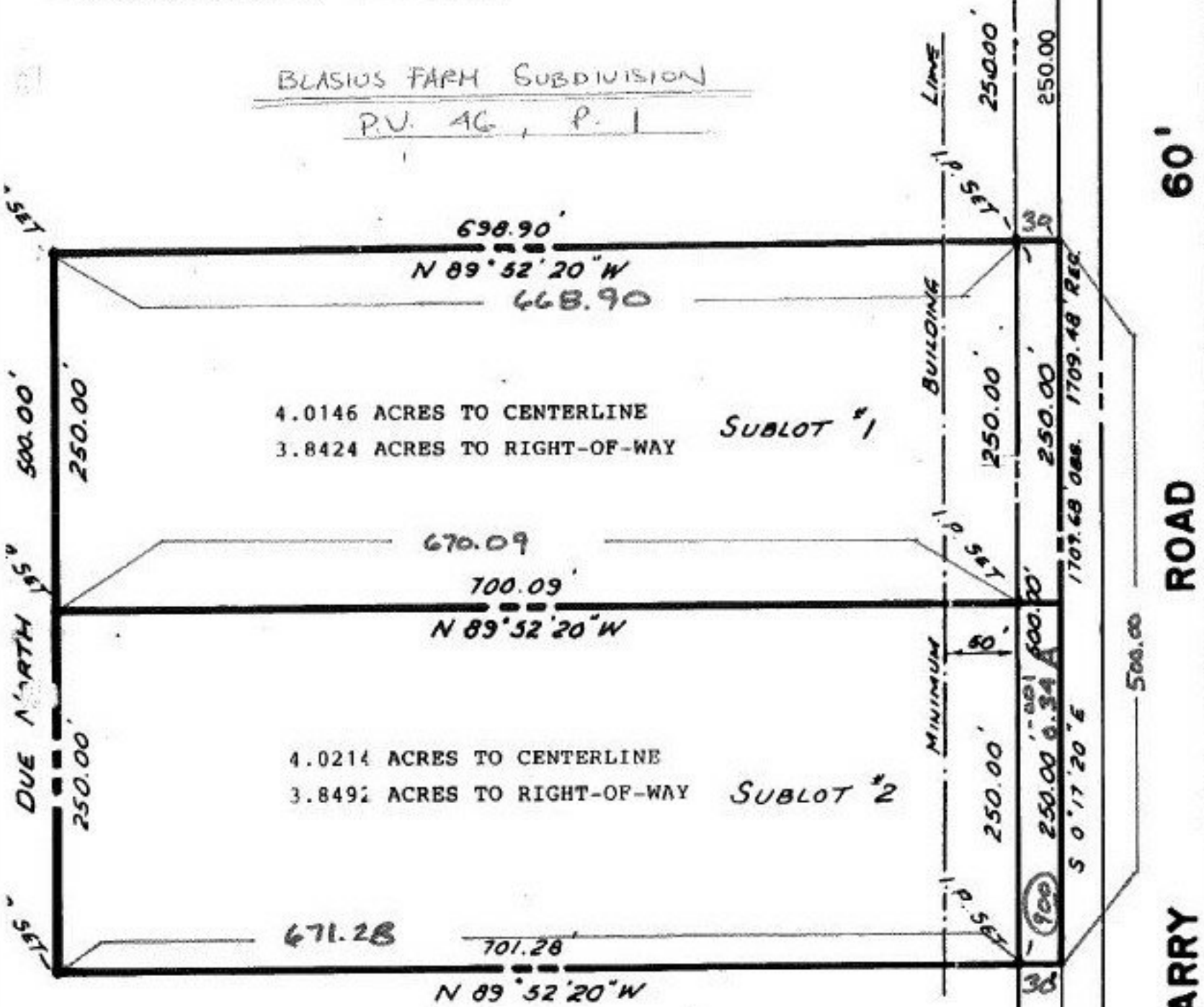


CORRECTION TO

BLASIUS FARM SUBDIVISION
P.V. 46, P. 1



ANNE M. BLASIUS
DEED VOL. 500 PG. 126

5/10/91
#19315-A

ADD TO DUP. &
PARCEL SIZE CORRECT.

APPROVED	
LORAIN CO.	
MAP DEPT.	
DATE	4/9/91
PAGE	17-D
BY	T. McNamee
VOID AFTER	19315-A

959.68