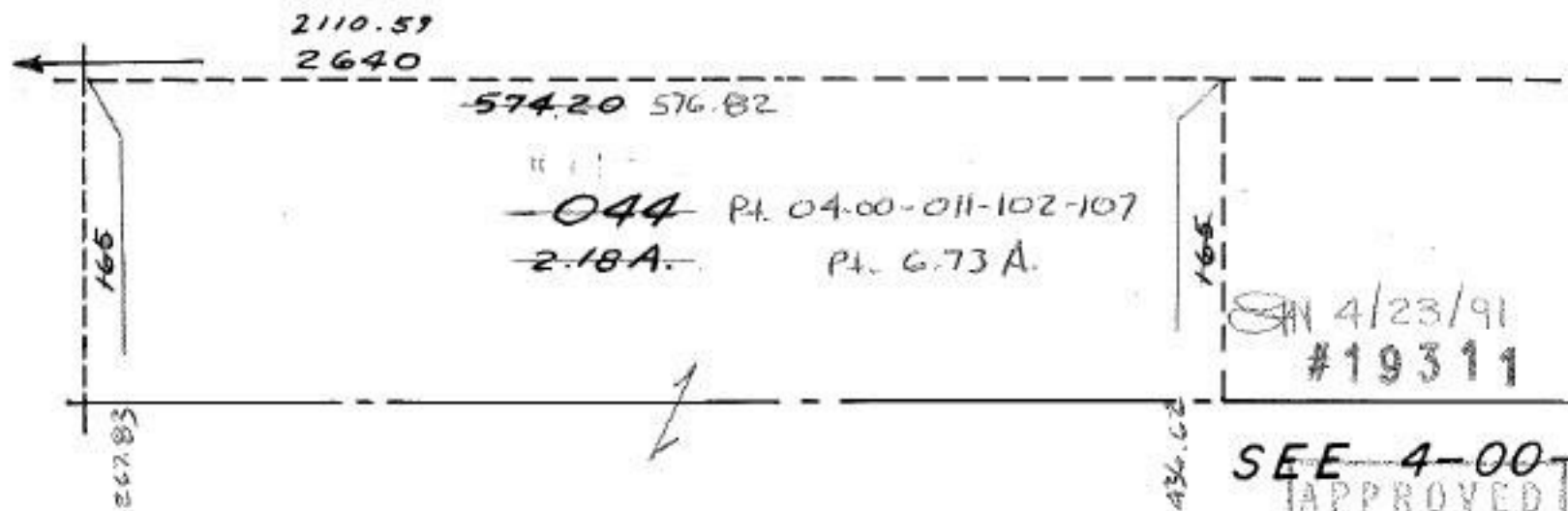


Pt. -109
Pt. 34.47A.



-044 Pt. 04-00-011-102-107
-2.18A. Pt. 6.73A.

SN 4/23/91
#19311

SEE 4-00

APPROVED
LORAIN CO.
MAP DEPT.

DATE 3/25/91

PAGE 4-00 of 4

BY T. McLean

19311