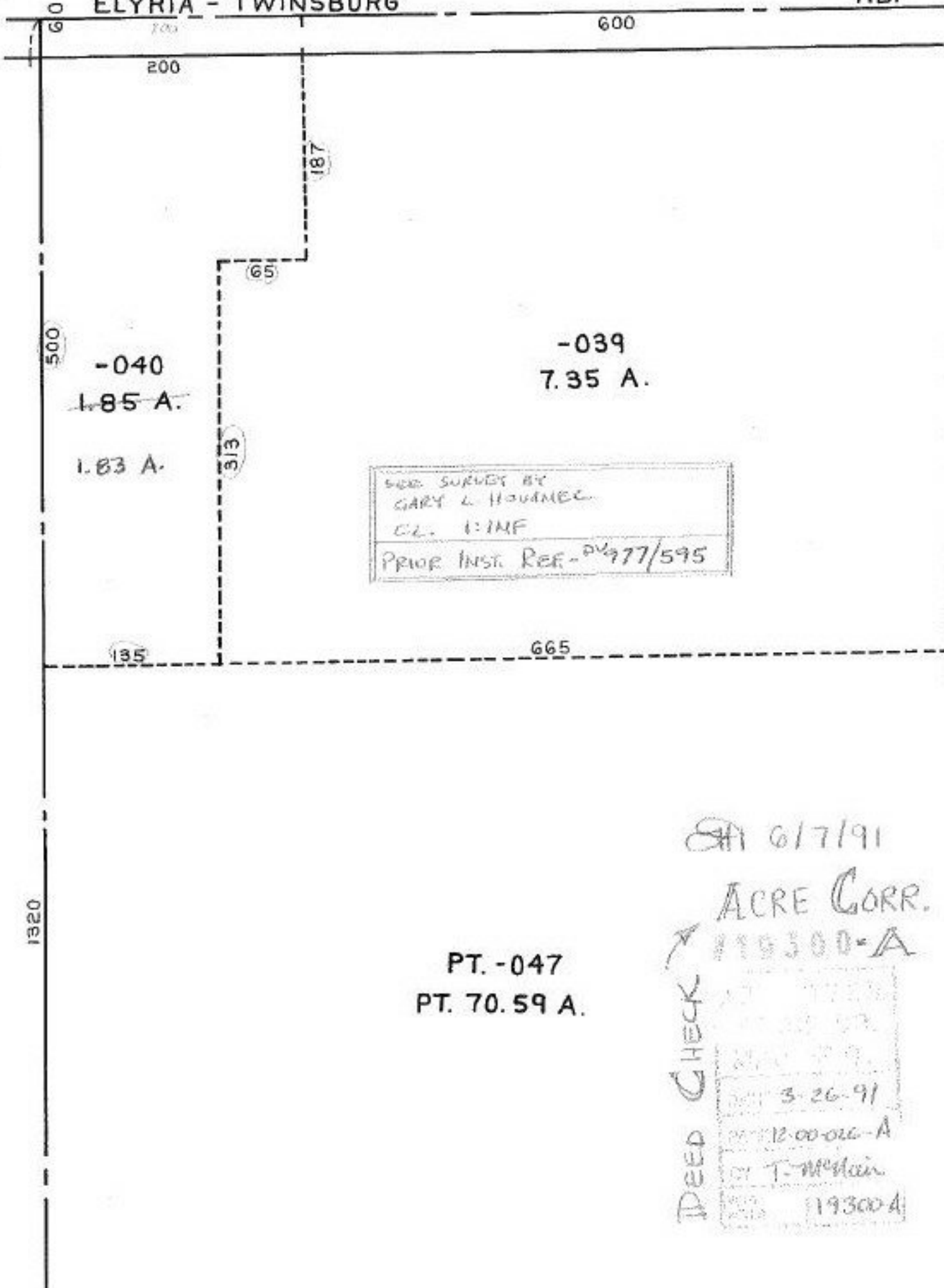


ELYRIA - TWINSBURG

RD.



-040
 1.85 A.
 1.83 A.

-039
 7.35 A.

SEE SURVEY BY
 GARY L. HOVINEC
 C.L. 1:1MF
 PRIOR INSTR. REF. - ^{PL} 977/595

PT. -047
 PT. 70.59 A.

SA 6/7/91
 ACRE CORR.
 119300-A

DEED CHECK

3-26-91
 12-00-016-A
 T. McMain
 119300-A