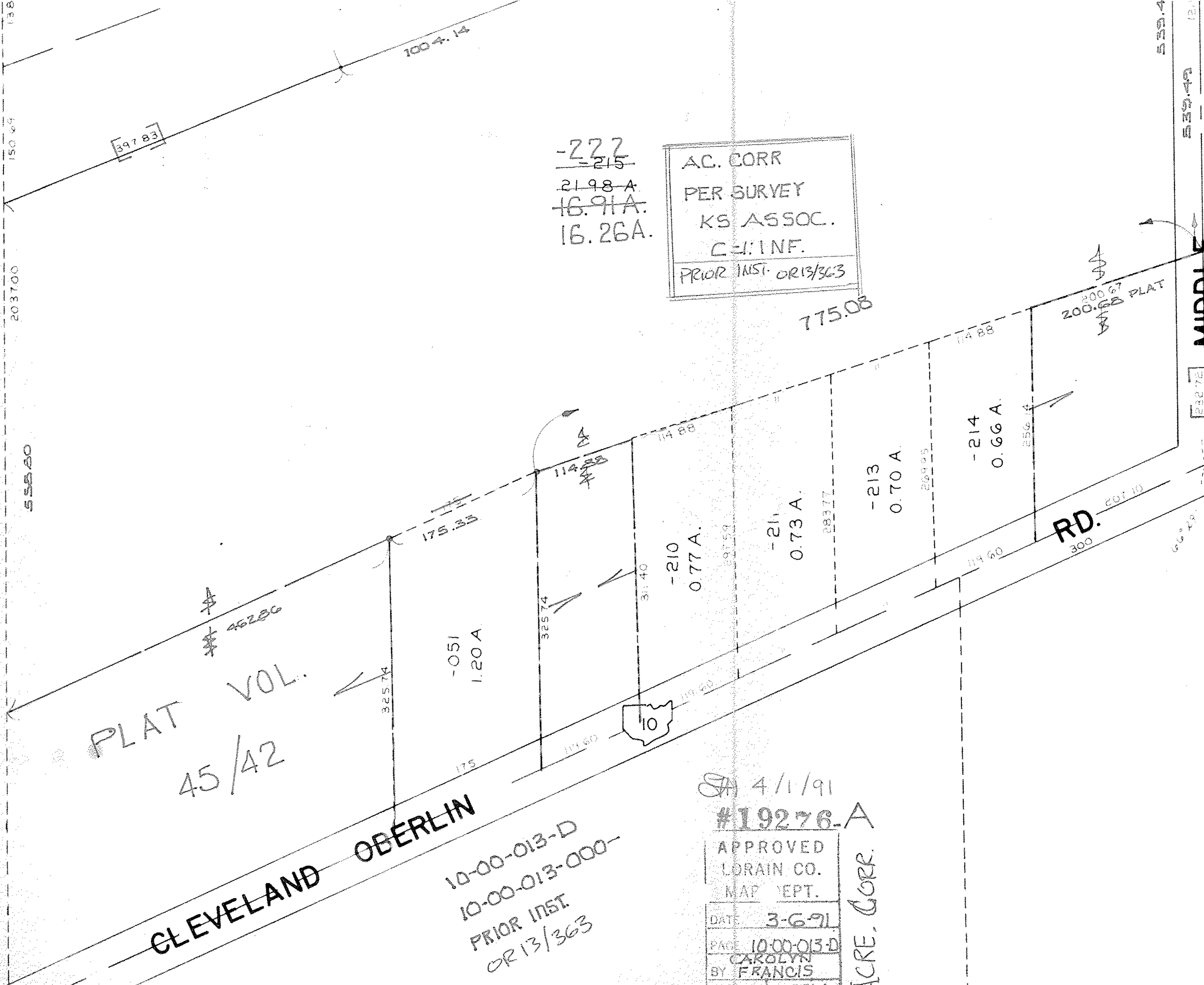


SEE 10-00-013-C

SEE 10-00-014-A



AC. CORR  
 PER SURVEY  
 KS ASSOC.  
 C.E. INF.  
 PRIOR INST. OR 13/363

~~-272~~  
~~-215~~  
~~21.98 A.~~  
~~16.91 A.~~  
 16.26 A.

PLAT VOL.  
 45/42

CLEVELAND OBERLIN

10-00-013-D  
 10-00-013-000-  
 PRIOR INST.  
 OR 13/363

SA 4/1/91  
 #19276-A

APPROVED  
 LORAIN CO.  
 MAP DEPT.  
 DATE 3-6-91  
 PAGE 10-00-013-D  
 CAROLYN  
 BY FRANCIS  
 VOL. # 19276A

ACRE. CORR.

RD.

MIDDLE

1089.00