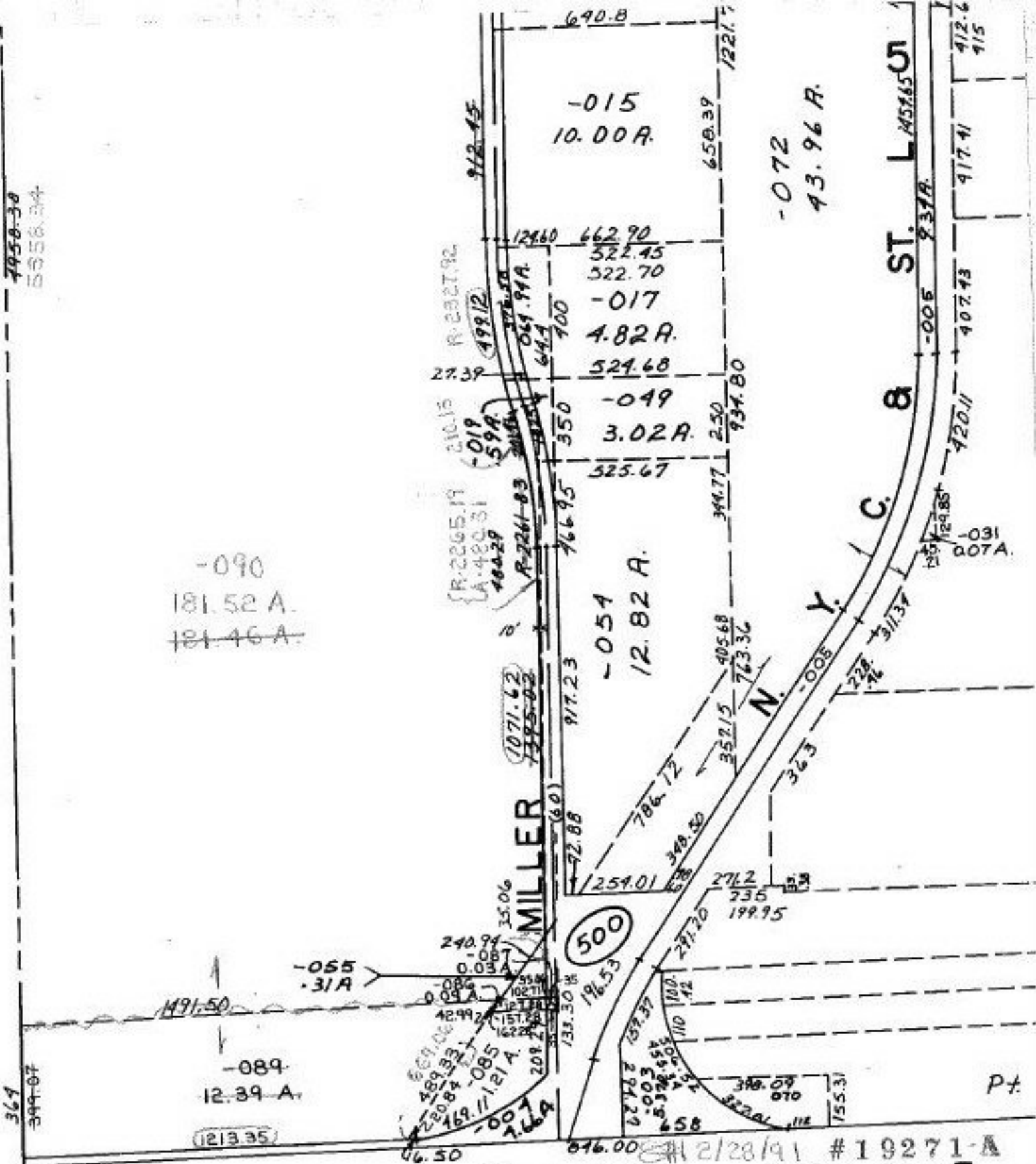


SEE 3 H

7958-38
15558.34



-090
181.52 A.
181.46 A.

-089
12.39 A.
(1213.35)

-015
10.00 A.

-017
4.82 A.

-019
3.02 A.

-054
12.82 A.

-055
3/1 A

-007
2.66 A

-072
43.96 A.

-031
0.07 A.

COMBINATION & ACREAGE CORRECTION
PER SURVEY BY: DOUGLAS P. McLAUGHLIN

SEE 4-E

APPROVED
LORAIN CO.
MAP DEPT.
DATE 2/28/91
PAGE 4-A
BY T. HOLLIS
VOID AFTER 19271-A

2/28/91 #19271-A