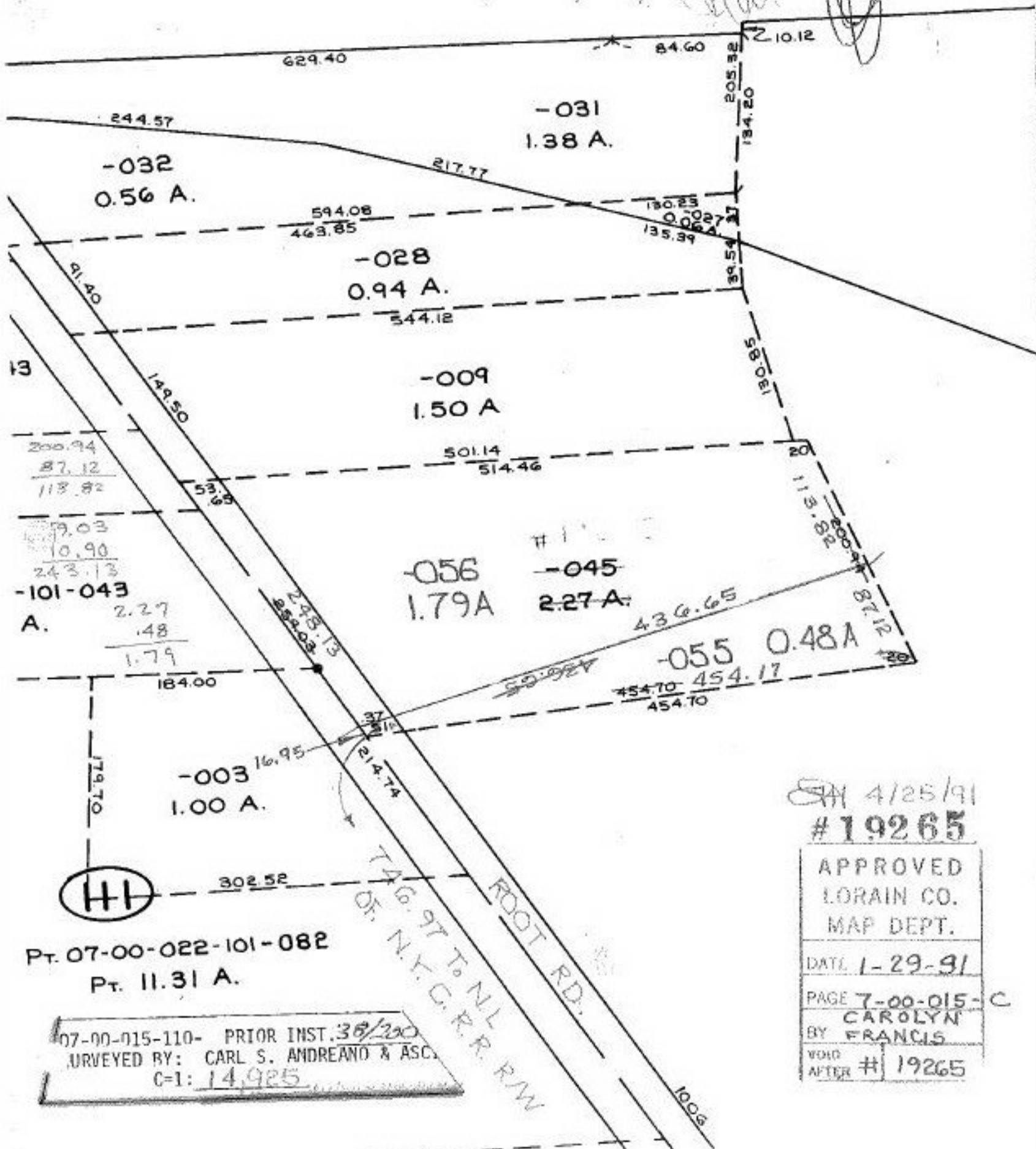
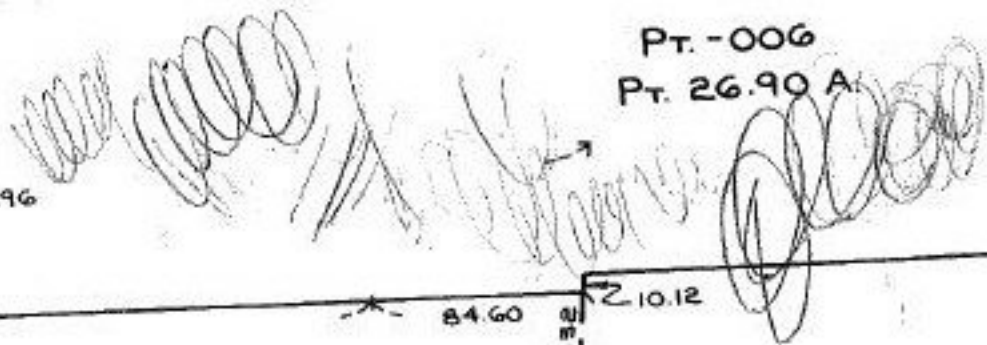


OHIO

Pt. -006
Pt. 26.90 A

759.96



Pt. 07-00-022-101-082
Pt. 11.31 A.

07-00-015-110- PRIOR INST. 38/200
SURVEYED BY: CARL S. ANDREANO & ASS.
C-1: 14,925

SA 4/25/91
#19265

APPROVED
LORAIN CO.
MAP DEPT.

DATE 1-29-91

PAGE 7-00-015-C
BY CAROLYN
FRANCIS

VOID
AFTER # 19265