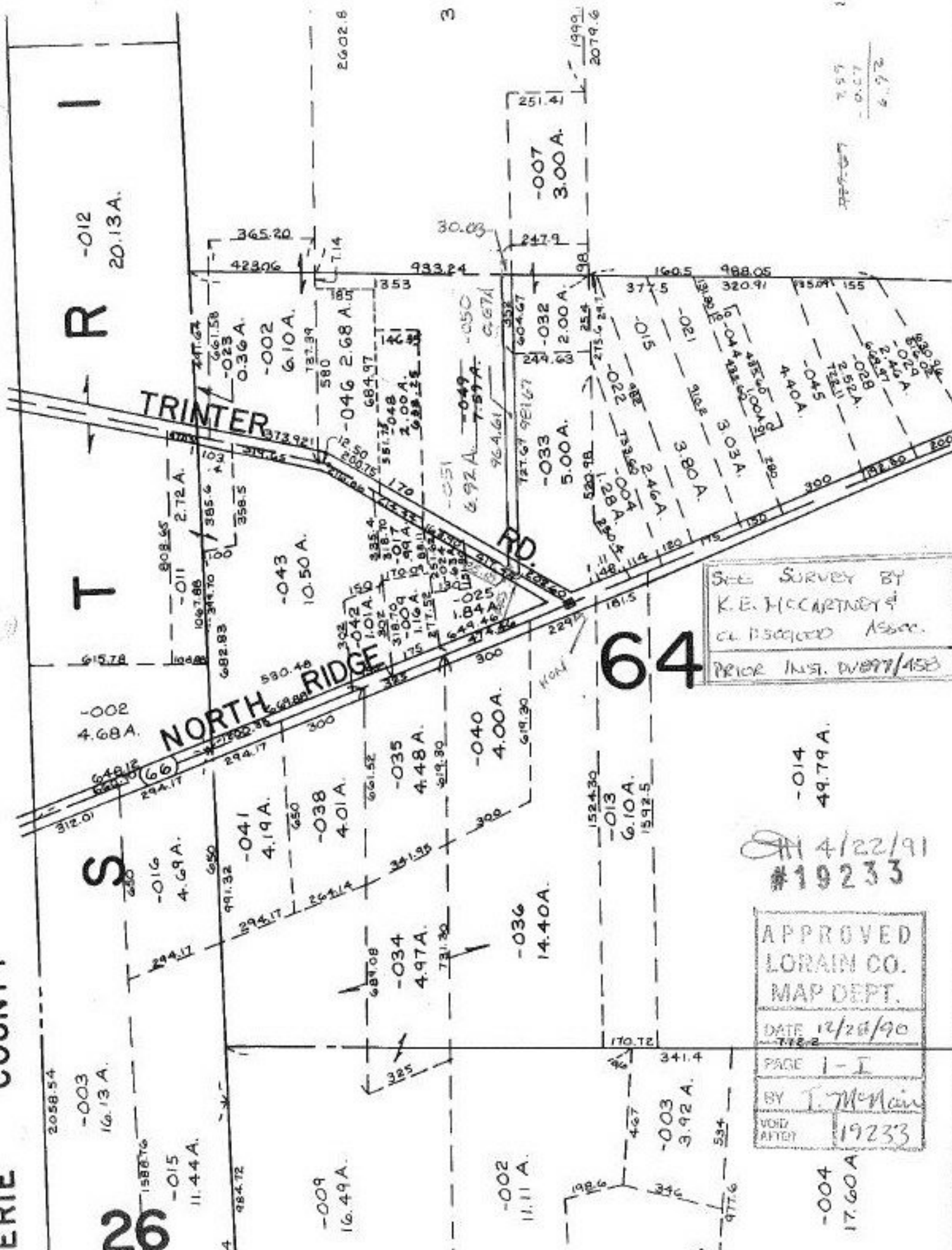


ERIE COUNTY

26



SEE SURVEY BY
 K. E. MCCARTNEY
 C. E. DISCIPLO ASSOC.
 PRIOR INST. D1897/453

4/22/91
 #19233

APPROVED
 LORAIN CO.
 MAP DEPT.
 DATE 12/28/90
 PAGE I-I
 BY J. McMain
 VOID AFTER 19233

2.97
 -0.07
 6.92

-014
 49.79 A.

-004
 17.60 A.

-002
 11.11 A.

-003
 3.92 A.

-013
 6.10 A.

-040
 4.00 A.

-009
 16.49 A.

-015
 11.44 A.

-016
 4.69 A.

-002
 4.68 A.

-007
 3.00 A.

-012
 20.13 A.