

-018  
36.47 A.

-015  
63.97 A.

38

155  
-019  
2.53 A.

415  
300  
-010  
1.03 A.

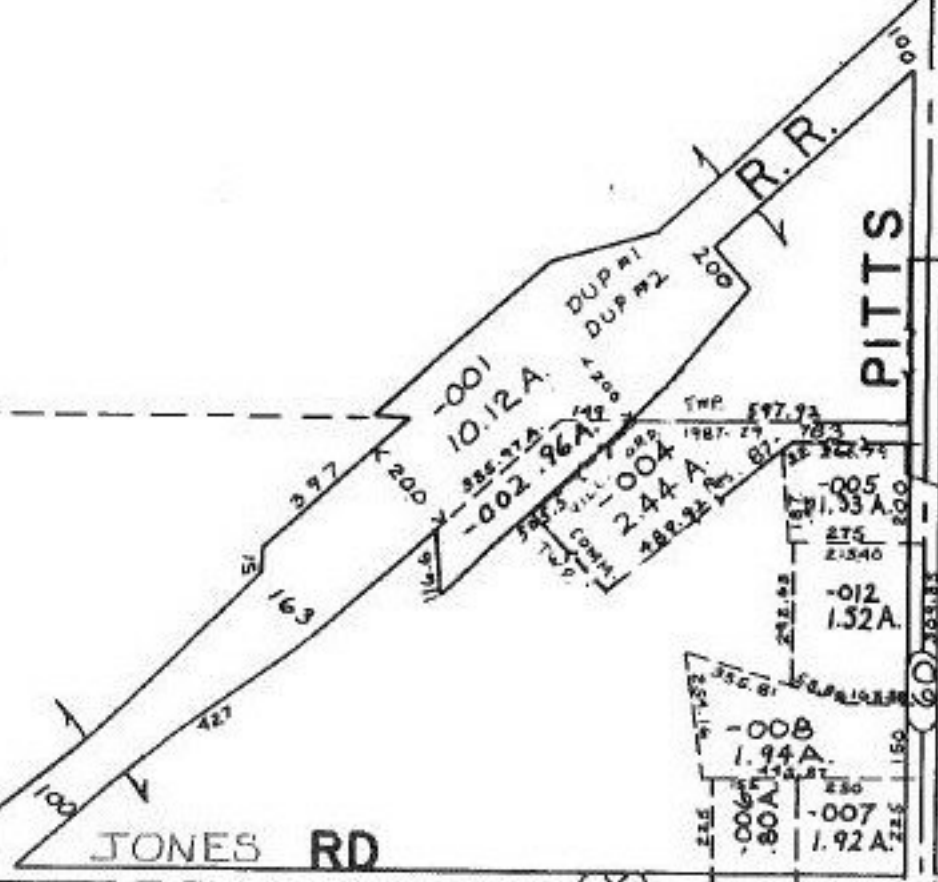
330 330  
-017  
5.00 A  
-014  
10.00 A.  
-016  
5.00 A  
660 330



G22.43

18-00-038-000- PRIORITY INST. 1413/343 C=1:inf.  
SURVEYED BY: WILLIAM B. BARTON REG. SURVEYOR

SEE 18-F



PITTS

TWP. 11  
VILL.

2/5/91  
#19192

APPROVED  
LOBAIN CO.  
MSP DEPT.  
MAR 10-29-90  
PAGE 18-E  
BY CAROLYN FRANCIS  
VOID AFTER #19192