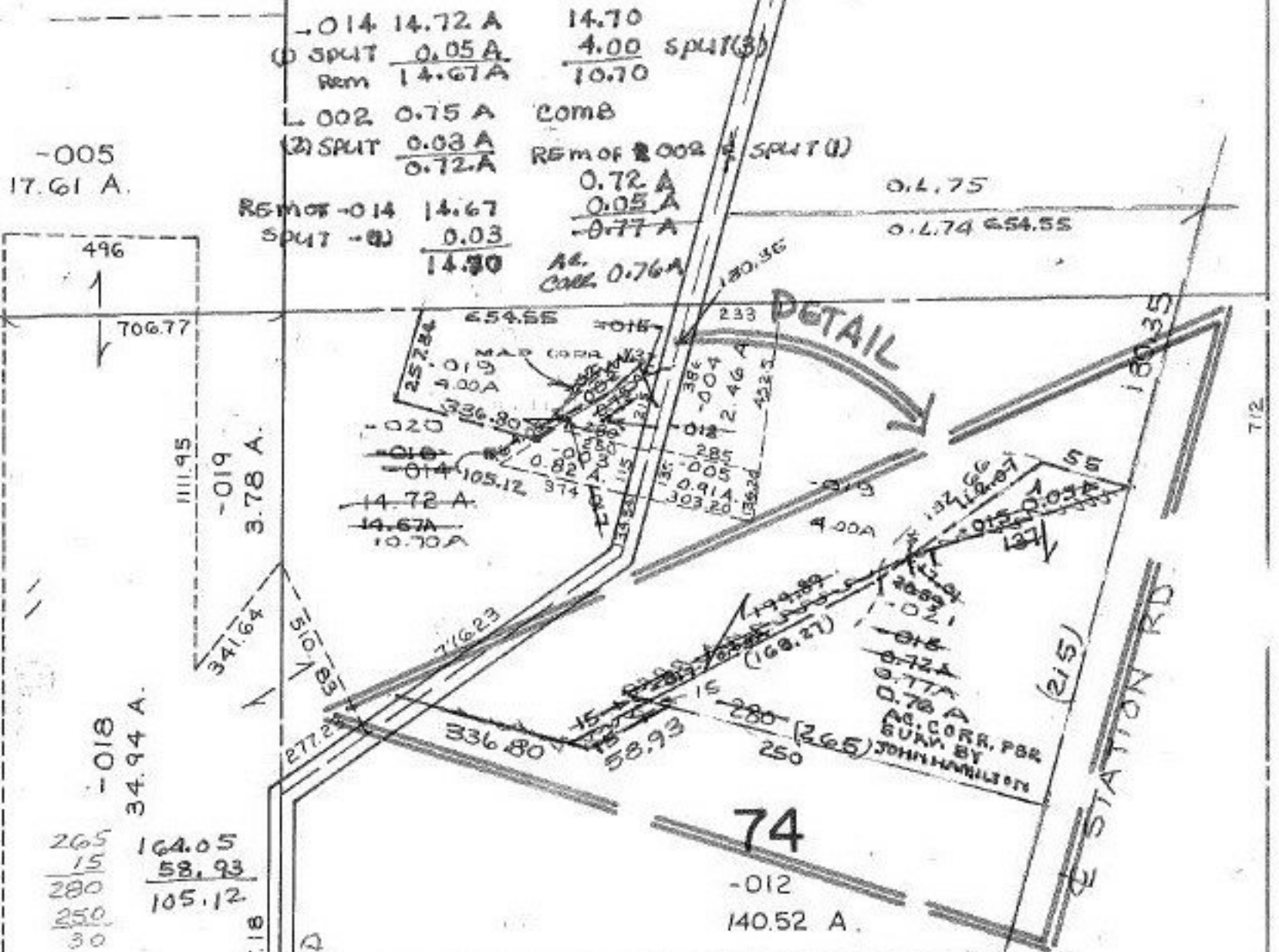


SEE 12

SEE 12



-005
17.61 A.

-014 14.72 A 14.70
 (1) SPLIT $\frac{0.05 A}{14.67 A}$ 4.00 split(3)
 Rem 10.70

L 002 0.75 A COMB
 (2) SPLIT $\frac{0.03 A}{0.72 A}$ REM of 2 002 SPLIT (1)
 0.72 A
 0.05 A
 -0.77 A

REM of -014 14.67
 SPLIT - (1) $\frac{0.03}{14.90}$

AC. CORR. 0.76 A

0.4.75
 0.4.74 654.55

DETAIL

496
 706.77

1111.95
 -019
 3.78 A.

-020
 -018
 -014
 14.72 A
 14.67A
 10.70A

-018
 34.94 A.

265
 15
 280
 250
 30

164.05
 58.93
 105.12

1497.18

STATION RD

74

-012
 140.52 A.

12-00-074-000- PRIOR INST. O.R. 75/586
 O.R. 127/360
 COMBINATION PRIOR INST. DV. 44/353
 SURVEYED BY: JOHN R. HAMILTON REG. SURVEYOR
 (1) 1:62,500 (2) 1:27,027 (3) 1:250,000
 (4) 1:52,631

2/14/91
 #19171

APPROVED
 LORAIN CO.
 MAP DEPT.

DATE 10-17-90
 1134-51

PAGE 12-E

BY CAROLYN
 FRANCIS

VOID AFTER # 19171

FFFFFFFFFFFFFFFFFFFFFFFFFFFFFFFF

RD.

(60)

Mon.

625

379

378

712

363.5

389.5