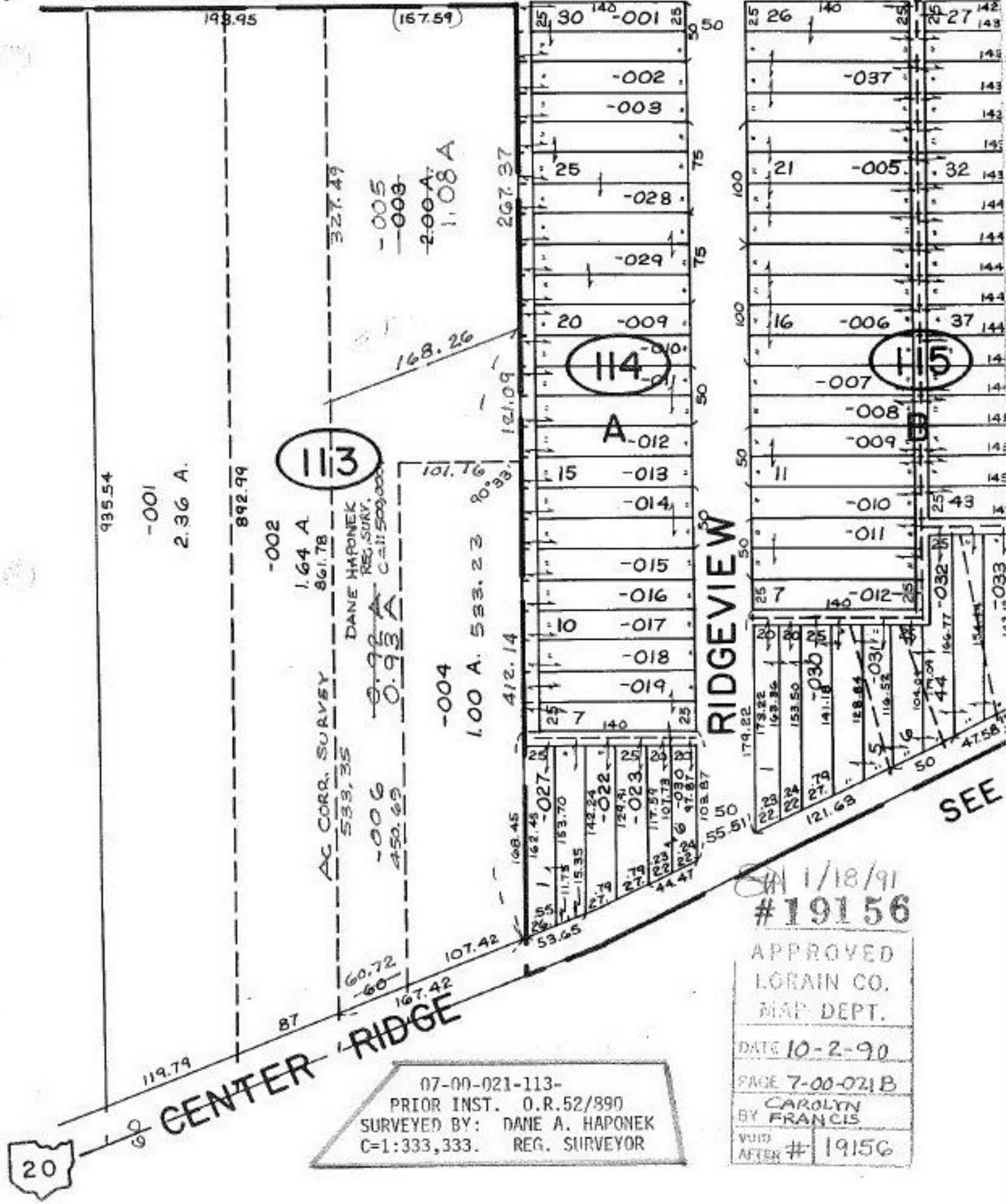


SEE

HADAWAY



07-00-021-113-
 PRIOR INST. O.R. 52/890
 SURVEYED BY: DANE A. HAPONEK
 C=1:333,333. REG. SURVEYOR

SA 1/18/91
 #19156

APPROVED
 LORAIN CO.
 MAP DEPT.
 DATE 10-2-90
 PAGE 7-00-021B
 CAROLYN
 BY FRANCIS
 VOID
 AFTER # 19156

SEE