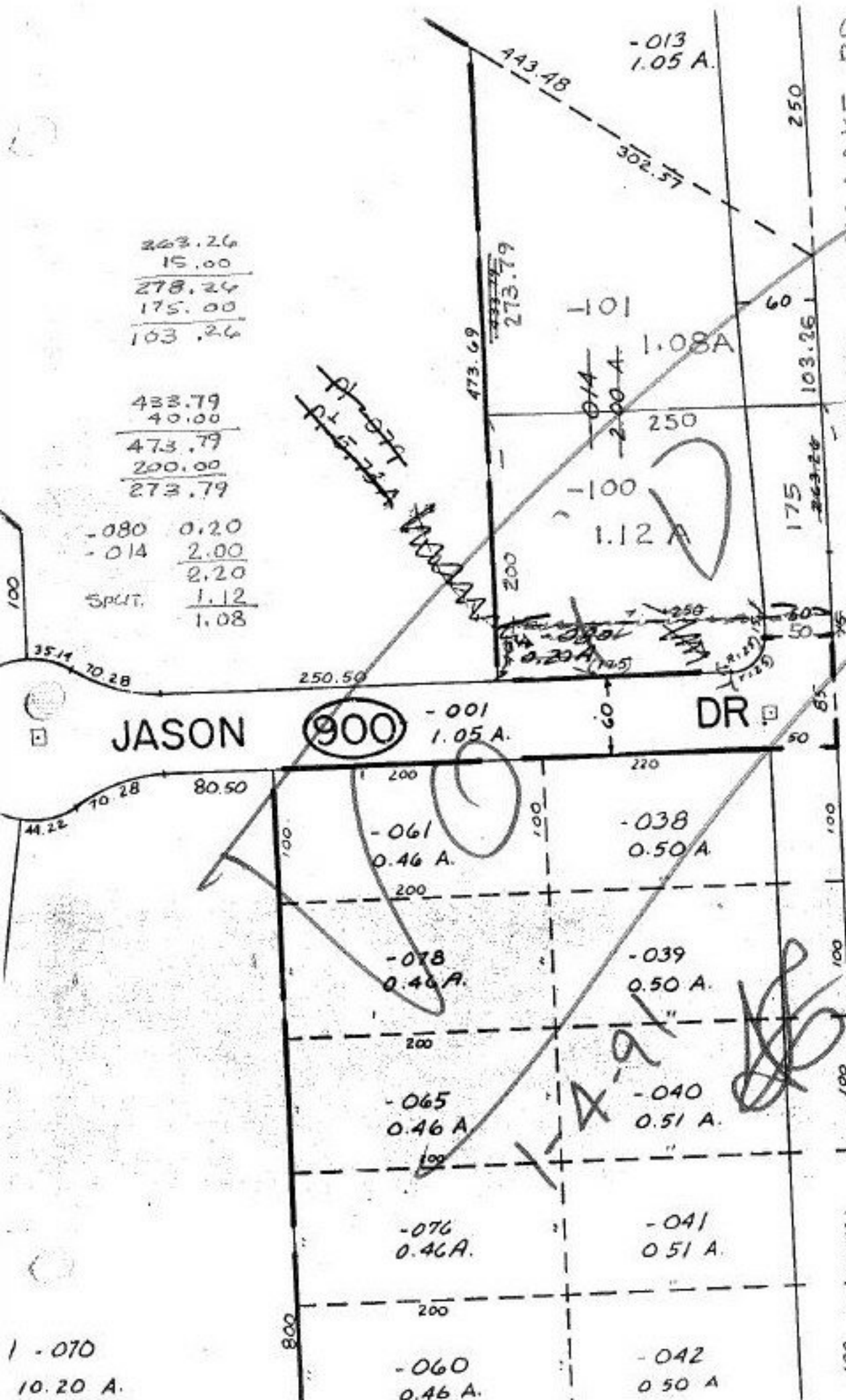


#14854

263.26
15.00
<hr/>
278.24
175.00
<hr/>
103.24

433.79
40.00
<hr/>
473.79
200.00
<hr/>
273.79

-080	0.20
-014	2.00
	<hr/>
	2.20
SPLIT	1.12
	<hr/>
	1.08



11-00-051-000- PRIOR INST. 322/64
 SURVEYED BY: DANE A. HAPONEK REG. SURVEYOR
 C-1: 200,000

3/13/91
 #19128

APPROVED
 LORAIN CO.
 MAP DEPT.
 DATE 9-14-90
 PAGE 11-00-051- B
 BY CAROLYN FRANCIS
 VOID AFTER #19128

#14854

APPROVED
 LORAIN CO.
 MAP DEPT.
 DATE 10-8-82
 PAGE 11-00-051- B
 BY C. FRANCIS
 VOID AFTER