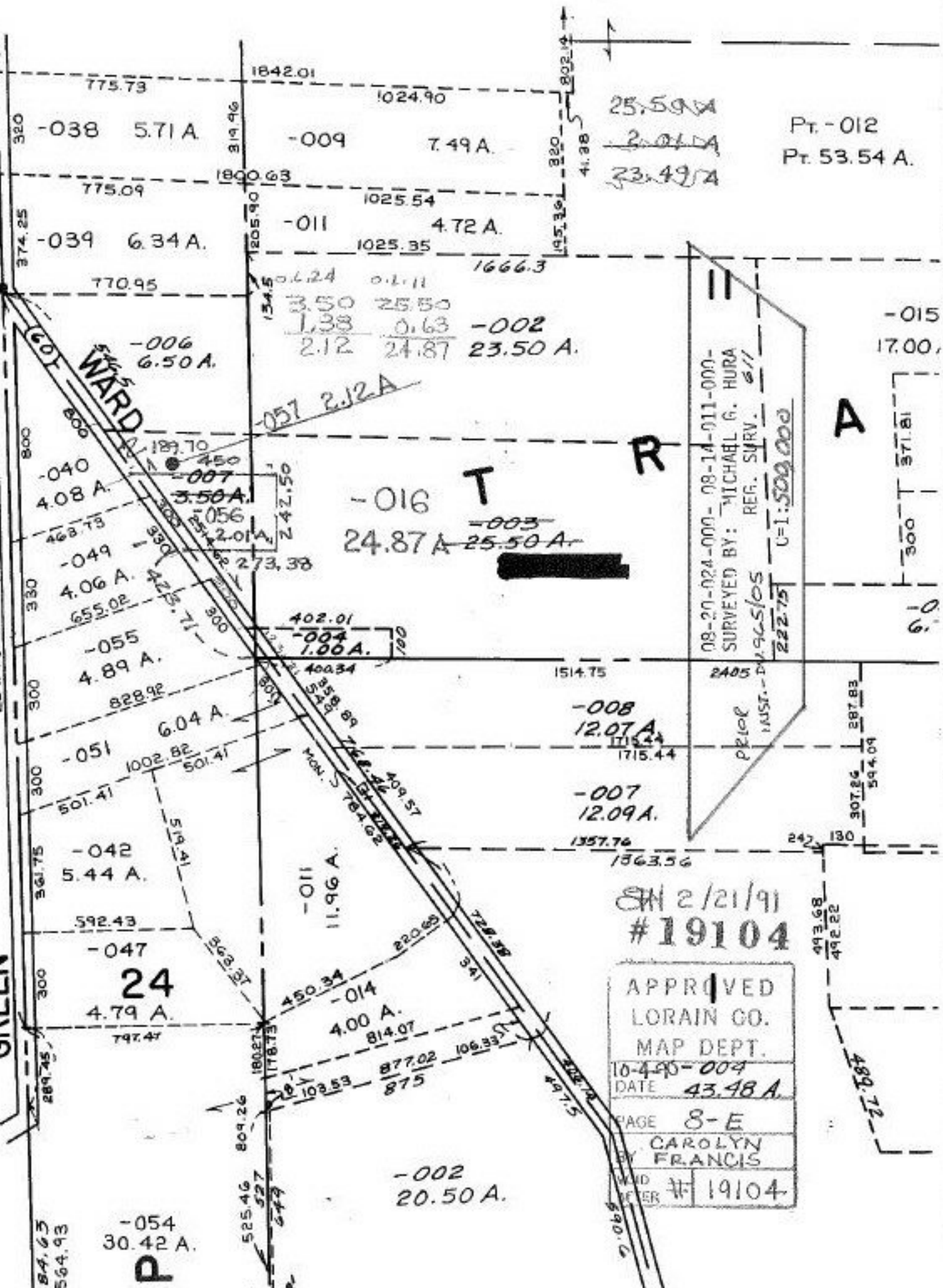


ST.

MON.

GREEN



25.59 A
~~2.01 A~~
 23.49 A

Pt. - 012
 Pt. 53.54 A.

1666.3
 0.124 0.111
 3.50 25.50
 1.33 0.63
 2.12 24.87 23.50 A.

-057 2.12 A

-016 T R A
 -003
 24.87 A 25.50 A

08-20-024-000-08-14-011-000-
 SURVEYED BY: MICHAEL G. HURA
 REF. SURV. 6/11
 222.75 U=1:500,000

-015
 17.00

A

-008
 12.07 A

-007
 12.09 A.

SN 2/21/91
 #19104

APPROVED
LORAIN CO.
MAP DEPT.
10-490-009
DATE 43.48 A.
PAGE 8-E
CAROLYN
FRANCIS
NO. 19104

-002
 20.50 A.

-054
 30.42 A.

P