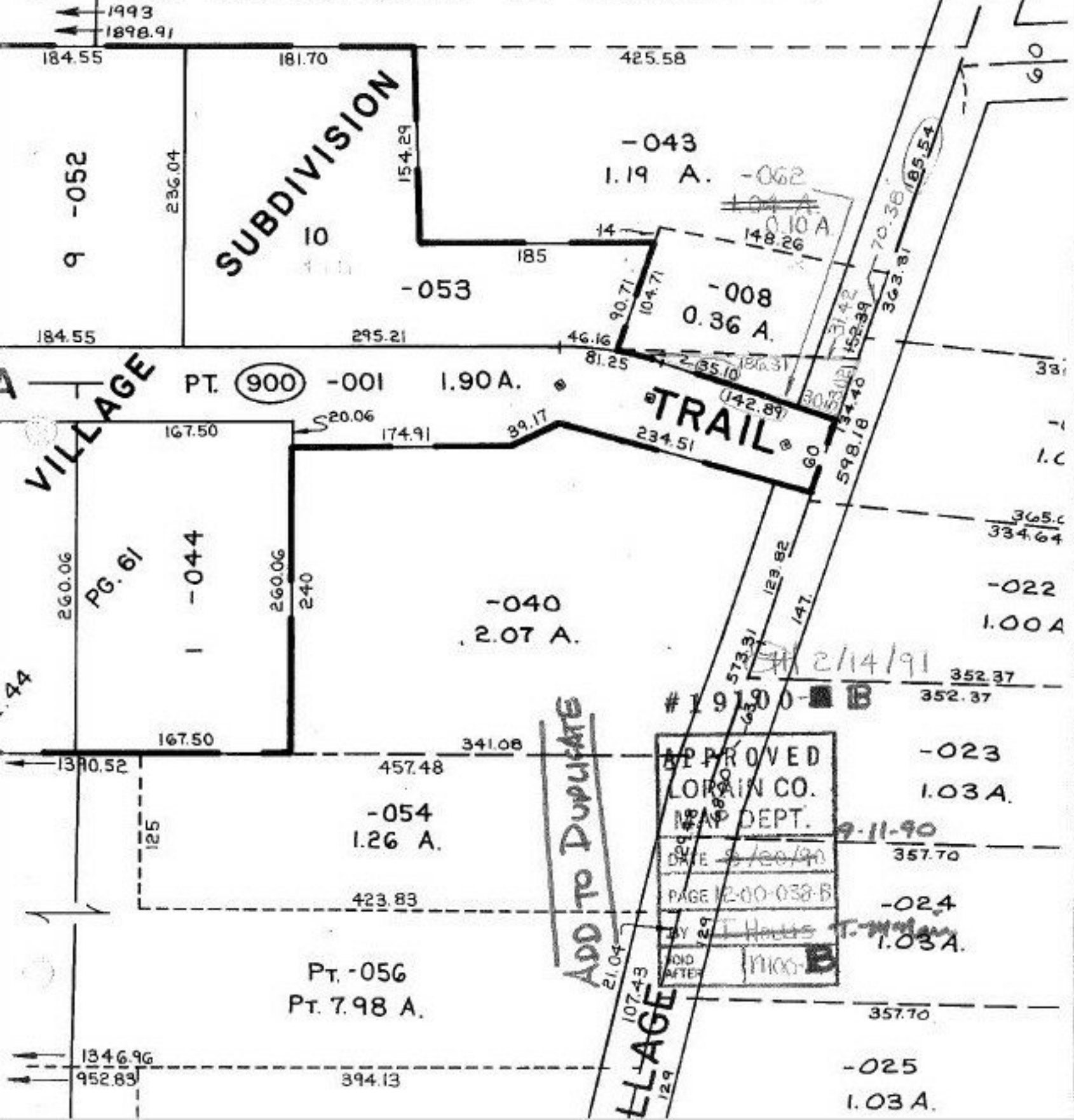


SEE 2-00-

ADD TO DUPLICATE:  
REMAINDER MISSED FROM COPOPA  
VILLAGE SUBDIVISION, SEE O.R. 318/667  
FOR CERTIFICATE OF CORRECTION



SUBDIVISION  
10

-043  
1.19 A. -062

-008  
0.36 A.

PT. (900) -001 1.90 A.

TRAIL

-040  
2.07 A.

-054  
1.26 A.

PT. -056  
PT. 7.98 A.

-023  
1.03 A.

-024  
1.03 A.

-025  
1.03 A.

APPROVED  
 LORAIN CO.  
 MAP DEPT.  
 DATE 9/20/90  
 PAGE 2-00-038-B  
 BY J. Harris T. Murray  
 9-11-90  
 1100-B

ADD TO DUPLICATE

VILLAGE