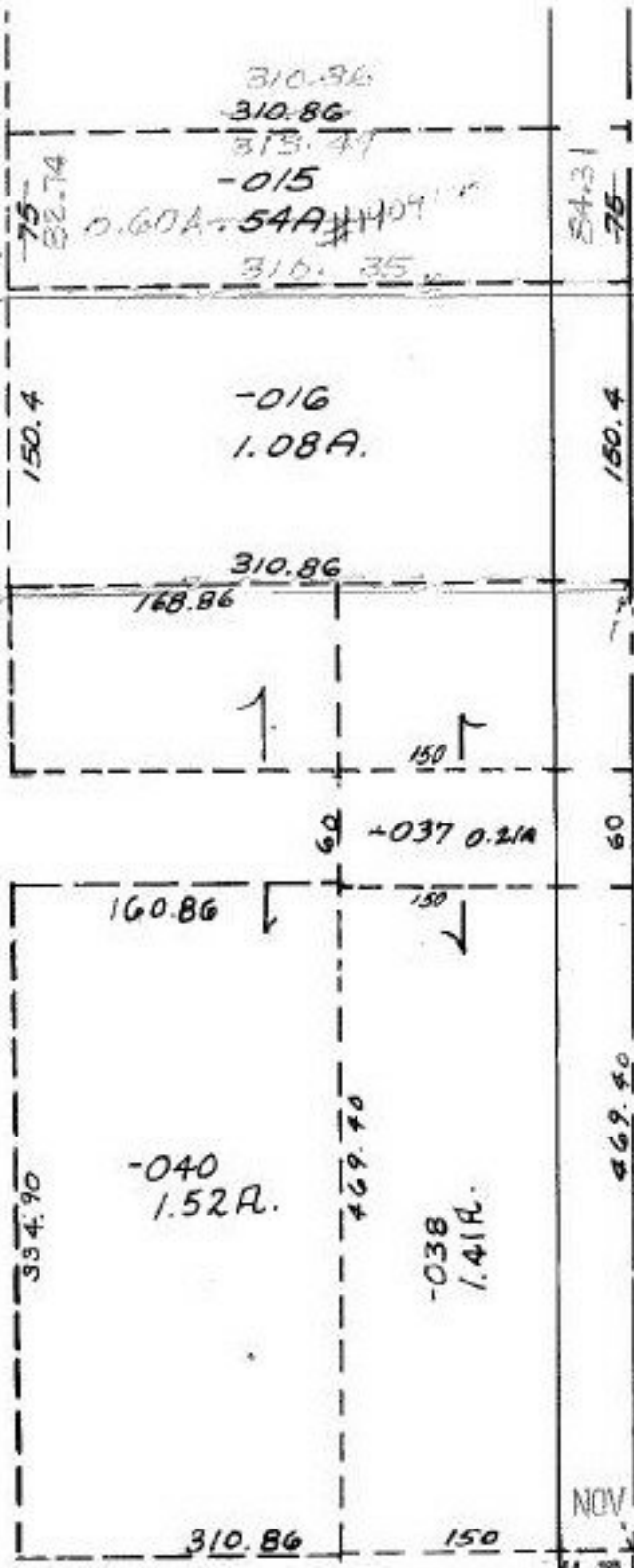


PRINCE GEORGE COUNTY
C=11,764.2

-039
26.02 R.

469.40



AC. CORR. &
MAP CORR.

SEE 5-00-048-A

PER SURVEY BY:
AC. CORR. K.S.A

05-00-033-000-015

NOV 29 1990

#19091-A

APPROVED
LORAIN CO.
MAP DEPT.
DATE: 5-16-90
PAGE: 5-00-033-8
BY: CAROLYN FRANCIS
VOID/AFTER: 113

195.5

RD. 24.43

230.0

60