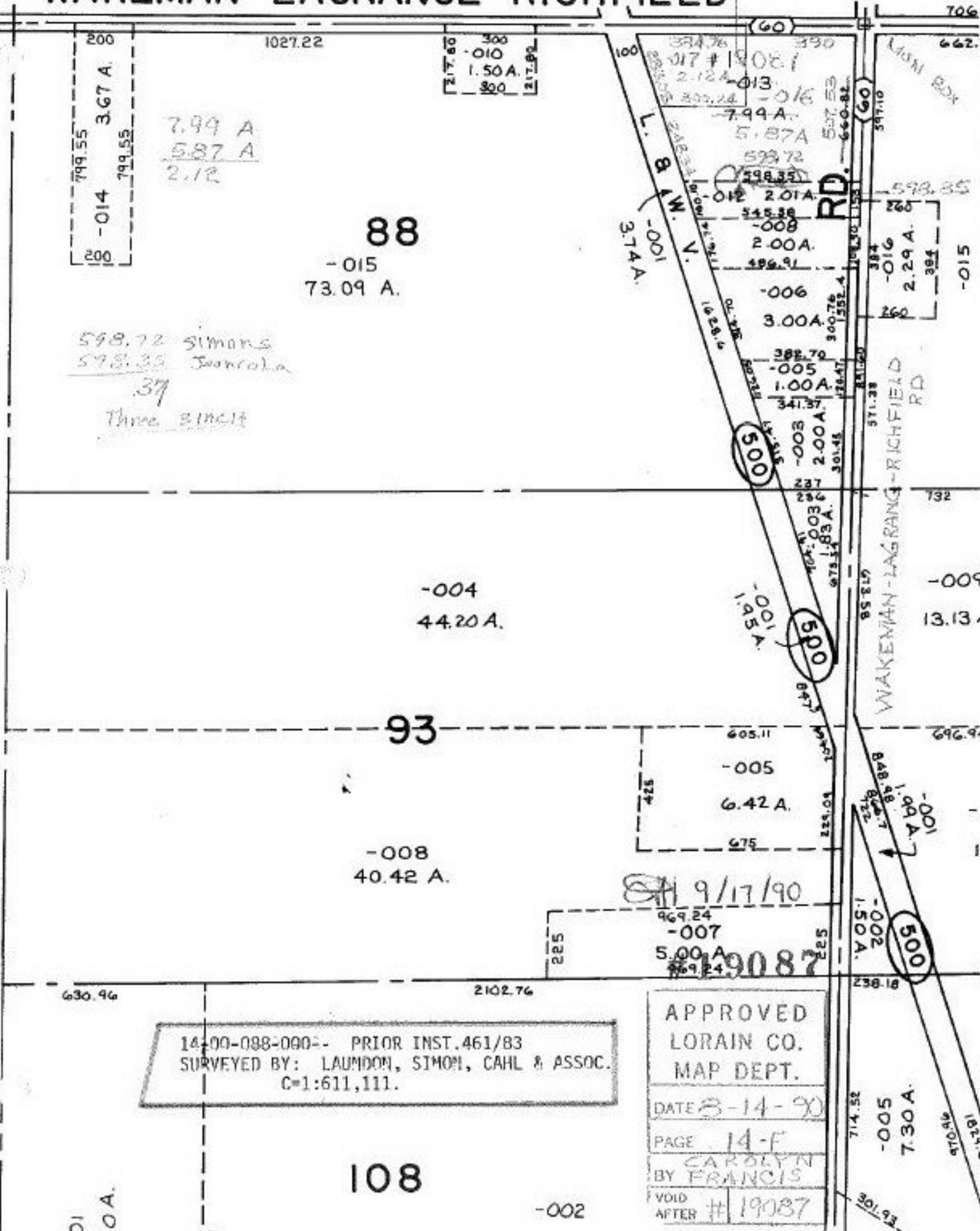


# WAKEMAN-LAGRANGE-RICHFIELD



799.55  
-014  
3.67 A.  
799.55

7.99 A  
5.87 A  
2.12

**88**  
-015  
73.09 A.

598.72 Simons  
598.35 Swencola  
37  
Three 31.14

-004  
44.20 A.

**93**

-008  
40.42 A.

**108**

14-00-088-000-- PRIOR INST. 461/83  
SURVEYED BY: LAUNDON, SIMON, CAHL & ASSOC.  
C=1:611,111.

APPROVED  
LORAIN CO.  
MAP DEPT.  
DATE 8-14-90  
PAGE 14-F  
CAROLYN  
BY FRANCIS  
VOID  
AFTER # 19087

-002

-005  
7.30 A.

01  
00A.