

270.01
 269.88

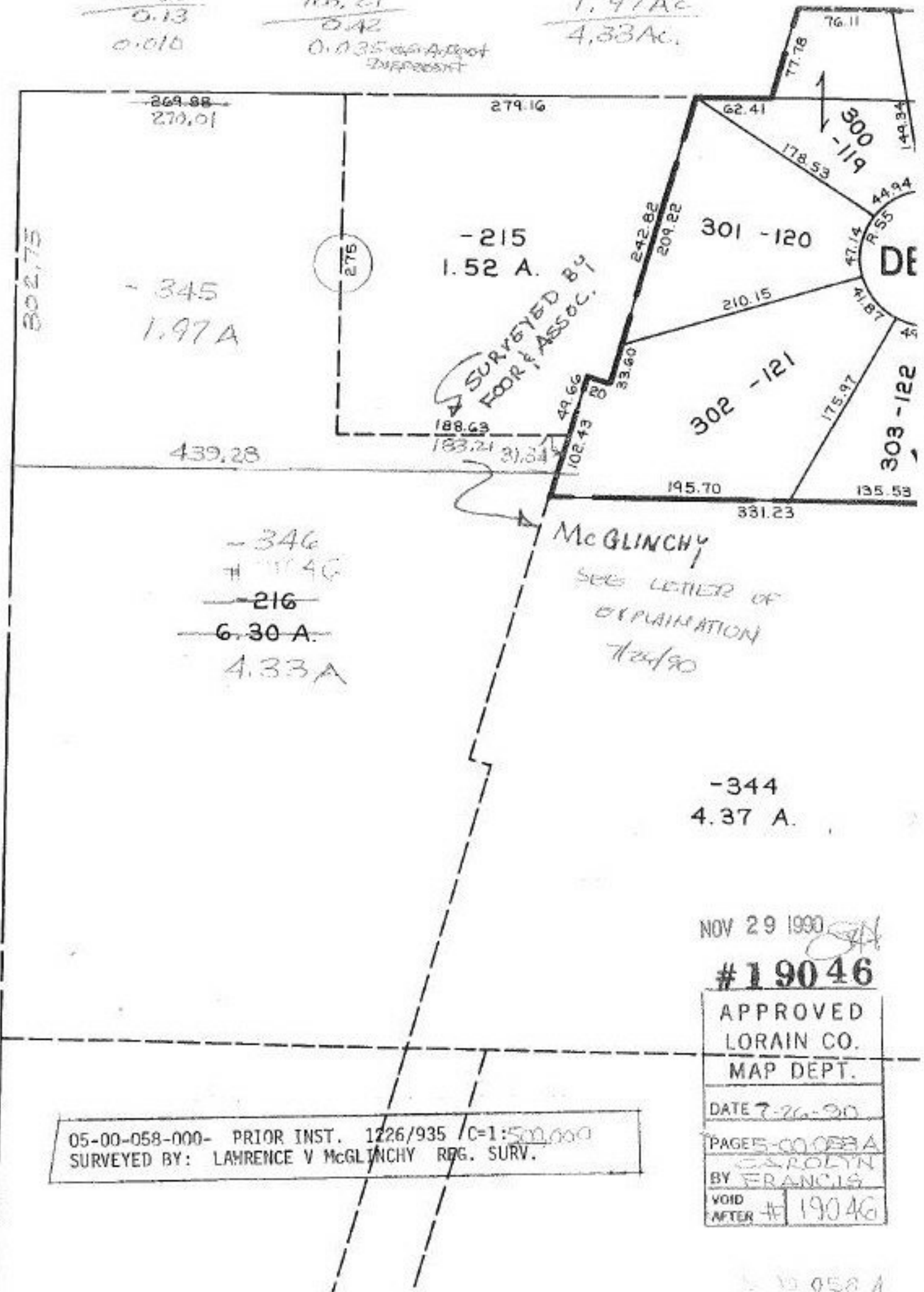
 0.13
 0.010

183.63 - 216 6.30 Ac.
 183.21

 0.42
 0.135 *diff. of foot*
 Discrepancy

1.97 Ac.

 4.33 Ac.



SURVEYED BY
 FOR ASSOC.

McGLINCHY
 SEE LETTER OF
 EXPLANATION
 7/24/90

05-00-058-000- PRIOR INST. 1226/935 C=1:500,000
 SURVEYED BY: LAWRENCE V McGLINCHY REG. SURV.

NOV 29 1990
 #19046
 APPROVED
 LORAIN CO.
 MAP DEPT.
 DATE 7-26-90
 PAGES-CO 058A
 BY CAROLYN
 FRANCIS
 VOID
 AFTER # 19046