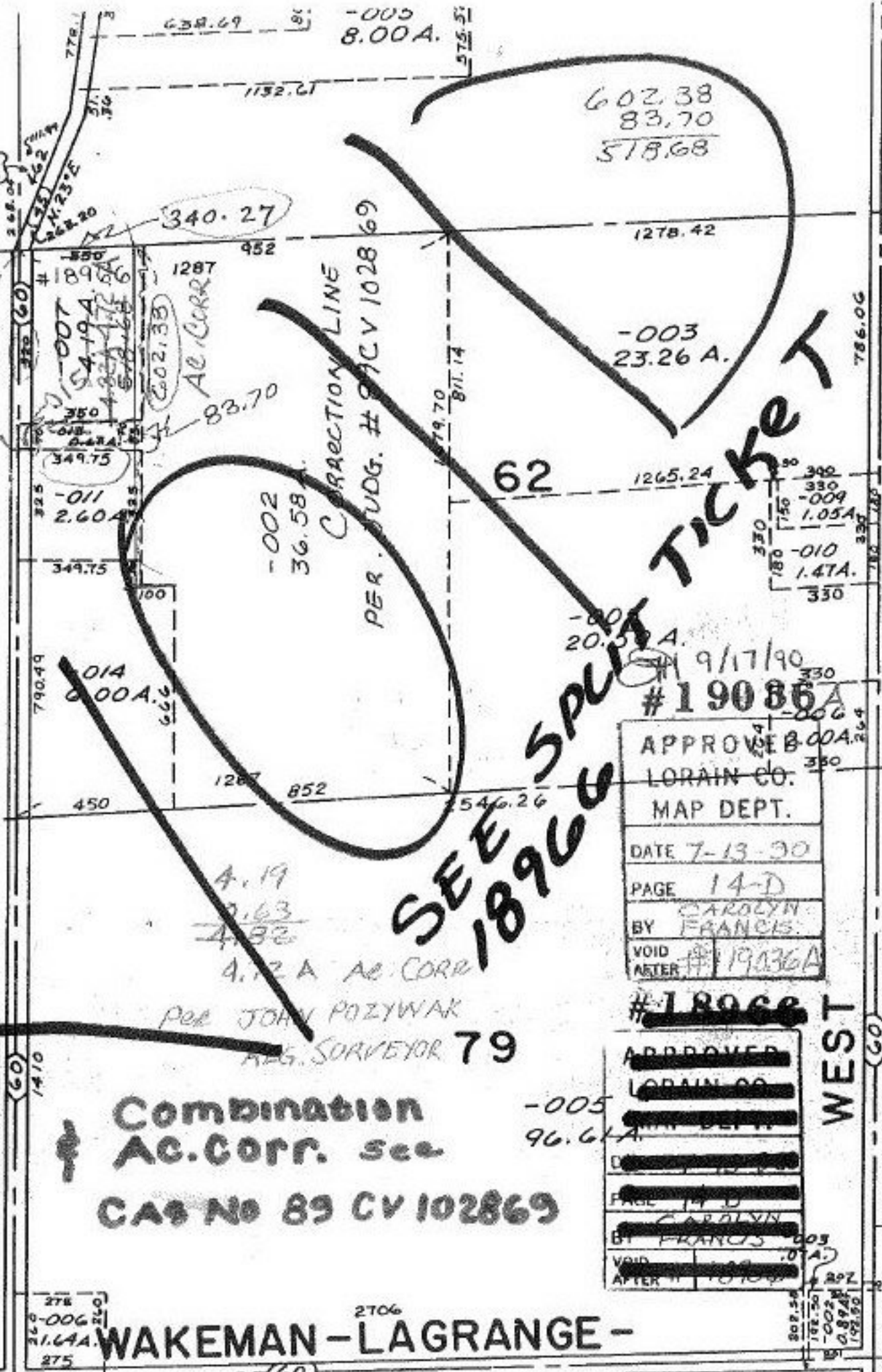


520
70
590

HAWLEY



602.38
83.70
518.68

340.27

-003
23.26 A.

-002
36.58 A.

62

1265.24

| |
|---------|
| 330 |
| -009 |
| 1.05 A. |
| -010 |
| 1.47 A. |
| 330 |

-001
20.57 A.

9/17/90
#19086

| |
|--------------------|
| APPROVED |
| LORAIN CO. |
| MAP DEPT. |
| DATE 7-13-30 |
| PAGE 14-D |
| BY CAROLYN FRANCIS |
| VOID AFTER #19036A |

| |
|--------------------|
| APPROVED |
| LORAIN CO. |
| MAP DEPT. |
| DATE 7-13-30 |
| PAGE 14-D |
| BY CAROLYN FRANCIS |
| VOID AFTER #19036A |

4.19
2.63
4.32

4.12 A AC CORR

PER JOHN POZYWAK
REG. SURVEYOR 79

Combination
AC CORR. see
CAS NO 89 CV 102869

-005
96.61 A.

WAKEMAN - LAGRANGE -

STRAIGHT TRANSFER WITH MAP CORR.

COMBINATION, AC CORR. 14-02-052-000-007

303

75
-0.
6.3
704.43