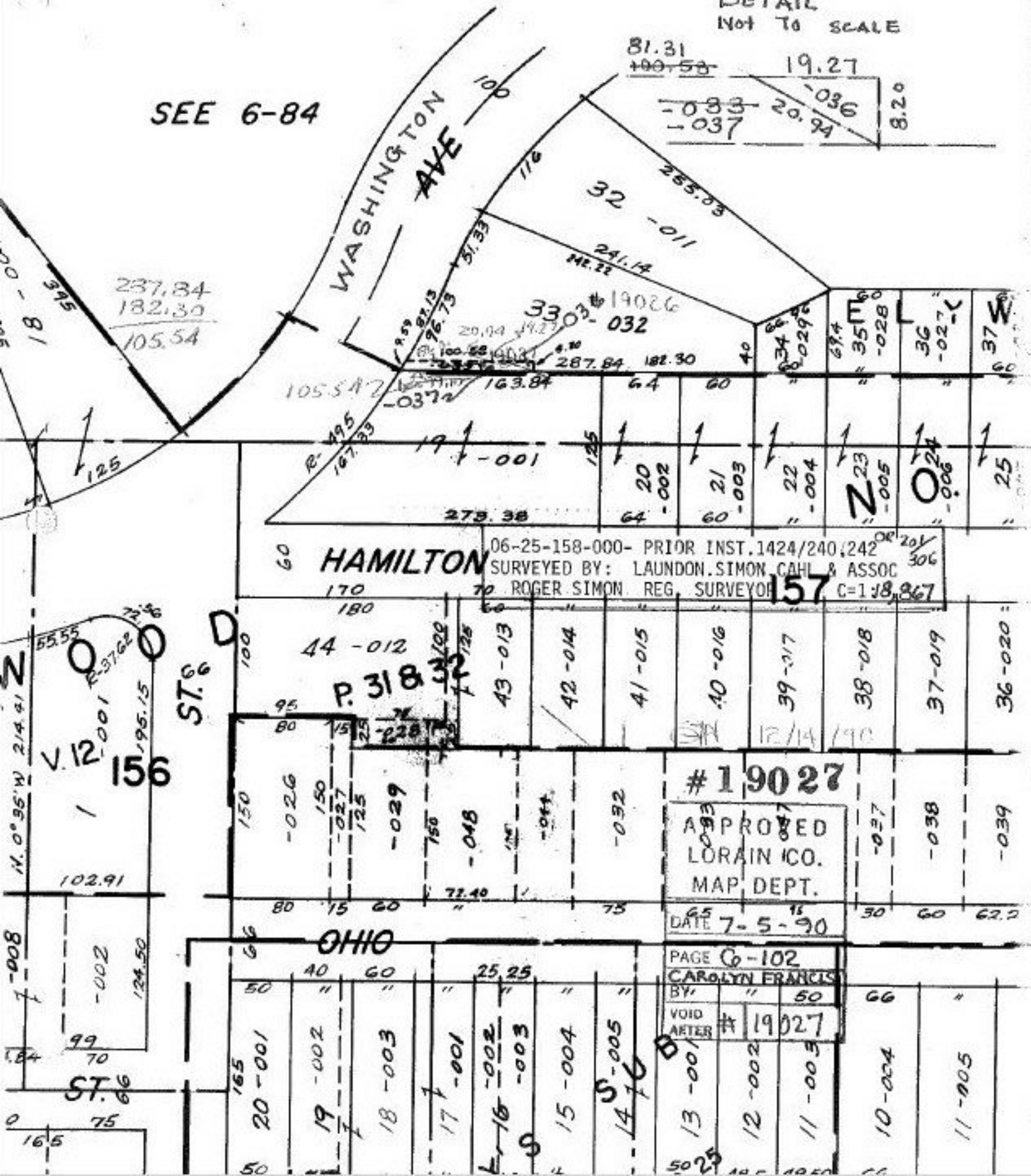


DETAIL
NOT TO SCALE

SEE 6-84



WASHINGTON AVE

HAMILTON

OHIO

06-25-158-000- PRIOR INST. 1424/240,242
 SURVEYED BY: LAUNDON SIMON CAHL & ASSOC
 TO ROGER SIMON REG. SURVEYOR

#19027
 APPROVED
 LORAIN CO.
 MAP DEPT.
 DATE 7-5-90

PAGE 6-102
 CAROLYN FRANCIS
 BY " 50
 VOID AFTER # 19027

13-001
 12-002
 11-003
 10-004
 11-005

44-012

P. 318

43-013
 42-014
 41-015
 40-016
 39-017
 38-018
 37-019
 36-020

#19027

APPROVED
LORAIN CO.
MAP DEPT.

DATE 7-5-90

PAGE 6-102

CAROLYN FRANCIS

BY " 50

VOID AFTER # 19027

13-001

12-002

11-003

10-004

11-005

105.54

237.84
 182.30
 105.54

3303-032
 19026

60

170

180

95

80

150

80

15

60

77.40

40

60

25.25

50

165

50

279.38

64

60

20

21

22

23

24

25

65

75

30

60

62.2

66

66

64

60

20

21

22

23

24

25

65

75

30

60

62.2

66

66

66

60

60

60

60

60

60

60

60

60

60

60

60

60

60

60

60

V. 12-001
 156
 195.15

ST. 6
 102.91
 124.50

ST. 6
 75

ST. 6 D

156

ST. 6

102.91

124.50

ST. 6

75

165

ST. 6 D

156

ST. 6

102.91

124.50

ST. 6

75

165

ST. 6 D

156

ST. 6

102.91

124.50

ST. 6

75

165

ST. 6 D

156

ST. 6

102.91

124.50

ST. 6

75

165

ST. 6 D

156

ST. 6

102.91

124.50

ST. 6

75

165

ST. 6 D

156

ST. 6

102.91

124.50

ST. 6

75

165

ST. 6 D

156

ST. 6

102.91

124.50

ST. 6

75

165

ST. 6 D

156

ST. 6

102.91

124.50

ST. 6

75

165

ST. 6 D

156

ST. 6

102.91

124.50

ST. 6

75

165

ST. 6 D

156

ST. 6

102.91

124.50

ST. 6

75

165

ST. 6 D

156

ST. 6

102.91

124.50

ST. 6

75

165

ST. 6 D

156

ST. 6

102.91

124.50

ST. 6

75

165

ST. 6 D

156

ST. 6

102.91

124.50

ST. 6

75

165

ST. 6 D

156

ST. 6

102.91

124.50

ST. 6

75

165

18
 395
 125

18
 395
 125

18
 395
 125

18
 395
 125

18
 395
 125

18
 395
 125

18
 395
 125

18
 395
 125

18
 395
 125

18
 395
 125

18
 395
 125

18
 395
 125

18
 395
 125

18
 395
 125

18
 395
 125

18
 395
 125

18
 395
 125

18
 395
 125

18
 395
 125

18
 395
 125

18
 395
 125

18
 395
 125

18
 395
 125

18
 395
 125

18
 395
 125

18
 395
 125

18
 395
 125

18
 395
 125

18
 395
 125

18
 395
 125

18
 395
 125

18
 395
 125

18
 395
 125

18
 395
 125

18
 395
 125

18
 395
 125

18
 395
 125

18
 395
 125

18
 395
 125

18
 395
 125

18
 395
 125

18
 395
 125

18
 395
 125

18
 395
 125

18
 395
 125

18
 395
 125

18
 395
 125

18
 395
 125

18
 395
 125

18
 395
 125

18
 395
 125

18
 395
 125

18
 395
 125

18
 395
 125

18
 395
 125

18
 395
 125

18
 395
 125

18
 395
 125

18
 395
 125

18
 395
 125

18
 395
 125

18
 395
 125

18
 395
 125

18
 395
 125

18
 395
 125

18
 395
 125

18
 395
 125

18
 395
 125

18
 395
 125

18
 395
 125

18
 395
 125