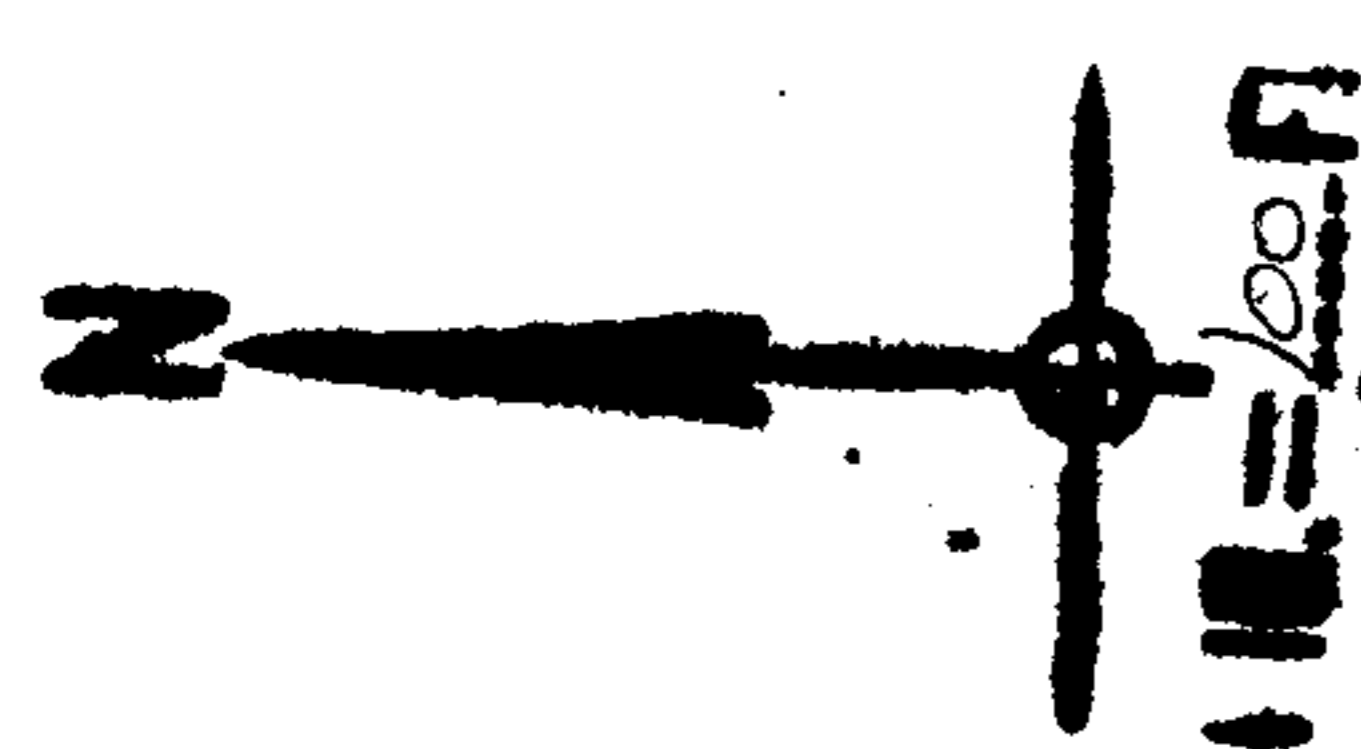


591
575
540 X 161
195
165

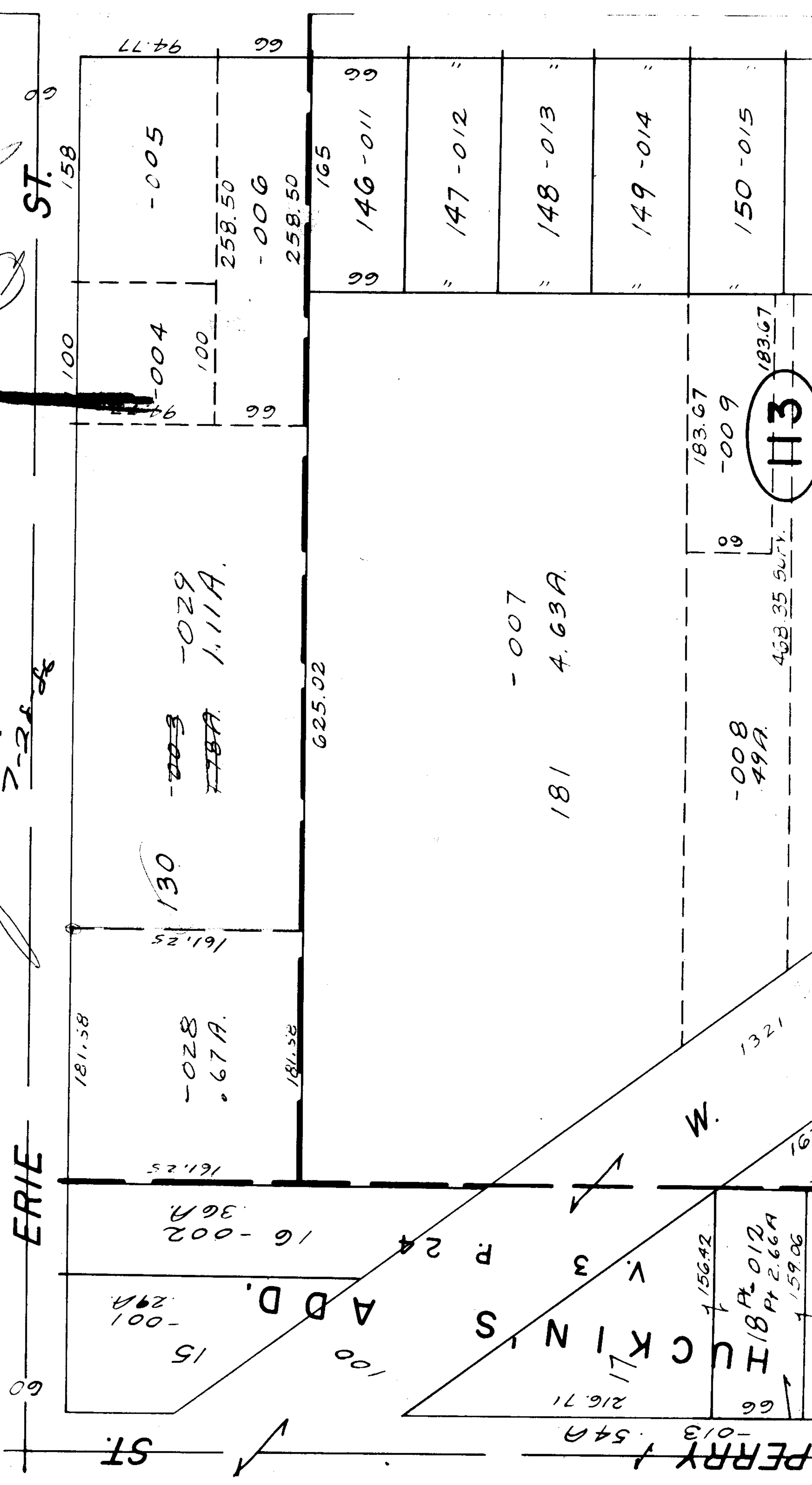
117 1/2
116 1/2
7/20/68
10/6/68
One
John
100 ft



APPROVED
LORAIN CO.
MAP DEPT.
DATE 6-27-68
18-00-027-D
BY *H. E. Kelly*

1900

J. S.
7-26-68



ERIE ST.

PERRY ST.

HUCKINS ST.

ADD. ST.

181.58

161.25

16-002
36A

15
-001
29A

-028
67A

130

~~-003~~
178A
1.11A

-029
1.11A

181.58

625.02

100

100

16-002
36A

15
-001
29A

216.71

17

15642

18A-012
18A-2.66A
15906

M

1321

100

94-004

-029
1.11A

~~-003~~
178A
1.11A

-028
67A

130

~~-003~~
178A
1.11A

-029
1.11A

66

258.50

66

165

146-011

147-012

148-013

149-014

150-015

183.67

-009

-008
49A

468.35 SURV.

183.67

113