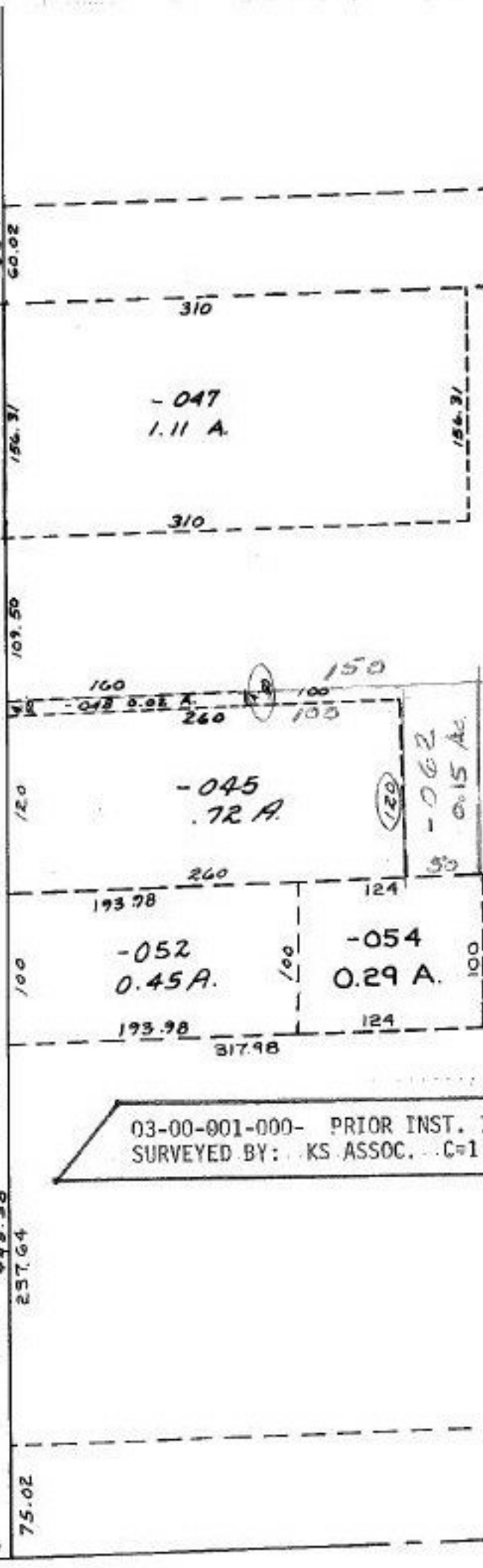


645.83
257.64
445.83
446.38
493.64
1305.35 TO MON. BOX



+049 13.09 A
0.15 A
12.94 A

-063
12.94 A

1898
-049
13.09 A.

03-00-001-000- PRIOR INST. 1356/569
SURVEYED BY: KS ASSOC. C=1:INF.

1/11/80
#18988
 APPROVED
 LORAIN CO.
 MAP DEPT.
 DATE 6-25-80
 PAGE 3-00-001A
 BY CAROLYN
 FRANCIS
 VOID
 ORDER # 18988