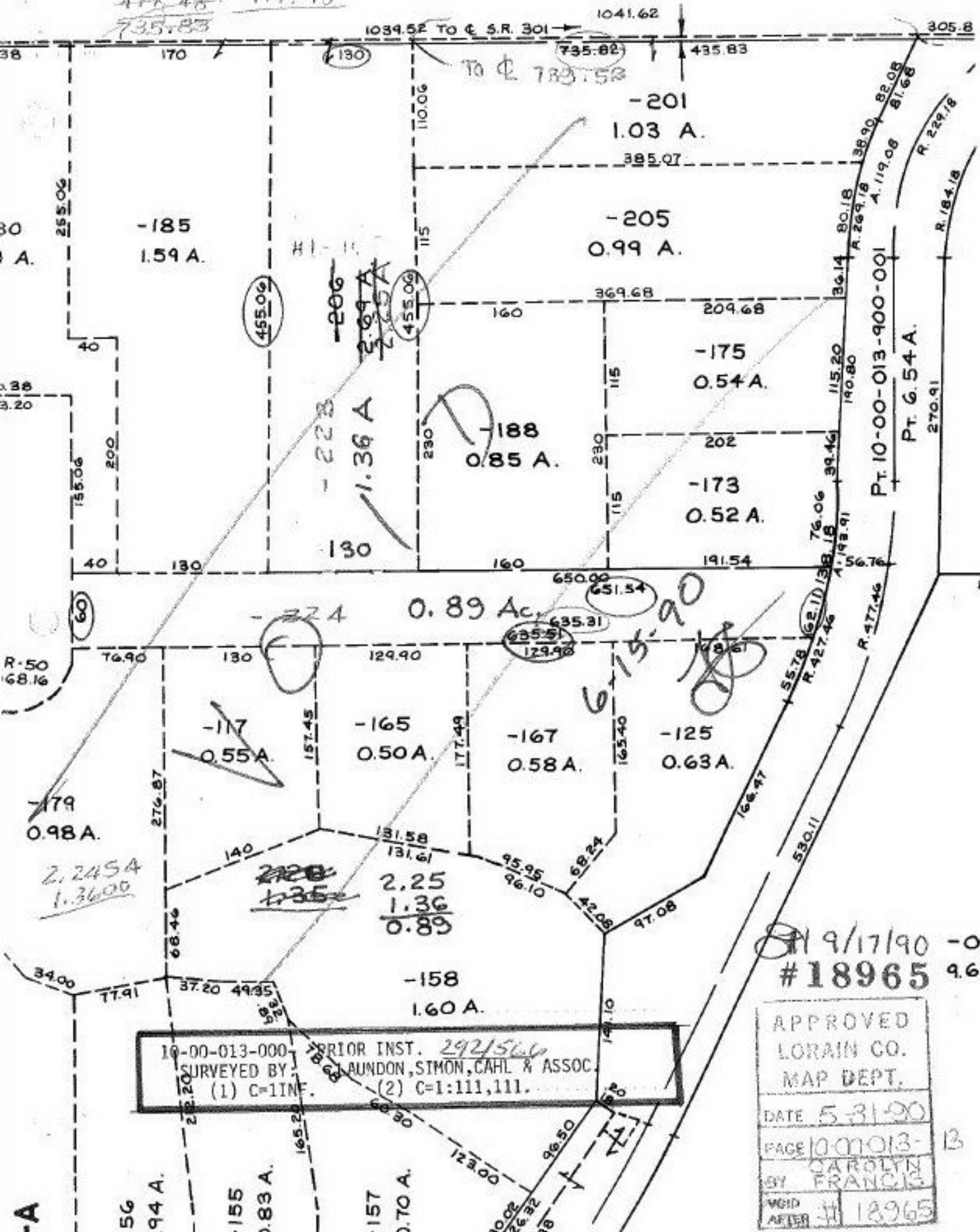


268.85 435.83
 477.48 477.48
 735.83



9/17/90 -
 #18965 9.60

10-00-013-000 PRIOR INST. 292/560
 SURVEYED BY: AUNDON, SIMON, CAHL & ASSOC.
 (1) C=111. (2) C=1:111,111.

APPROVED
 LORAIN CO.
 MAP DEPT.
 DATE 5-31-90
 PAGE 10-00-013-13
 BY CAROLYN FRANCIS
 WGD AFTER #18965