

- 004
9.27 A.

1365.37

- 011 1.10 A

- 012 8.17 A

005
9.27 A.

SPUT. 1.52 A

REM 7.75 A

1361.07

#1816
212
7A. ~~012~~ - 016
 ~~8.17A~~ 7.75A.

1146.75

E 5-D

295.38

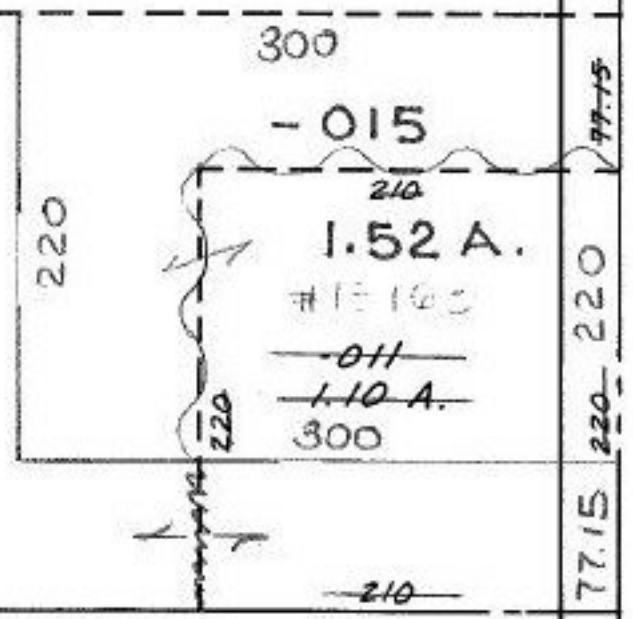
296.21

WEST RIDGE

97.75

220

77.15



NOV 29 1990

#18963

05-00-083-000- PRIOR INST. 1352/541 1263/132
SURVEYED BY: K.E. MCCARTNEY & ASSOC. 3/90
C=1:INF.

APPROVED
LORAIN CO.
MAP DEPT.

DATE 6-5-90

PAGE 5-00-083

CAROLYN
BY FRANCIS

VOID # 18963