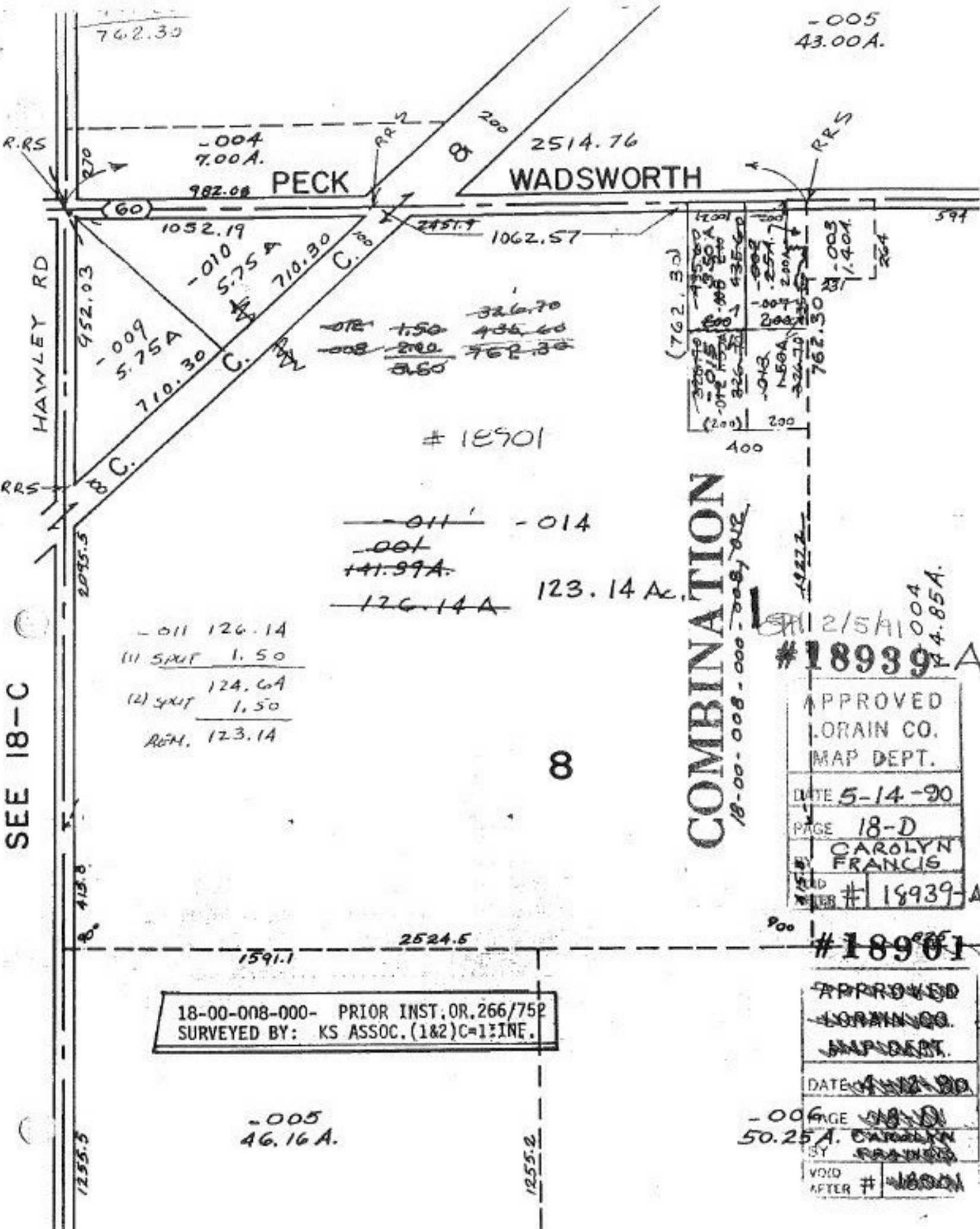


SEE 18-C



-005
43.00A.

-004
7.00A.

WADSWORTH

PECK

-010
5.75A

-009
5.75A

~~012 1.50~~ ~~326.70~~
~~008 2.00~~ ~~435.60~~
~~0.50~~ ~~762.30~~

18901

~~-011~~ -014

~~-001~~
~~+41.99A~~

~~-126.14A~~ 123.14 Ac.

-011 126.14
~~(1) 5X12 1.50~~

124.64
~~(2) 5X12 1.50~~

REM. 123.14

COMBINATION

18-00-008-000-008-012

18939 A

APPROVED
ORAIN CO.
MAP DEPT.

DATE 5-14-90

PAGE 18-D

CAROLYN FRANCIS

18939-A

18901

APPROVED
ORAIN CO.
MAP DEPT.

DATE 5-14-90

-006
50.25A. CAROLYN FRANCIS

VOID AFTER # 18901

-005
46.16A.

1255.2

1255.5

1591.1

2524.5

900

413.8

2095.5

952.03

970

762.30

1052.19

710.30

2451.7

1062.57

200

2514.76

594

400

1922.2

1.40A

762.30

200

200

200

200

200

200

200

200

200

200

200

200

200

200

200

200

200

200

(762.30)

1200

1200

1200

1200

1200

1200

1200

1200

1200

1200

1200

1200

1200

1200

1200

1200

1200

1200

1200

1200