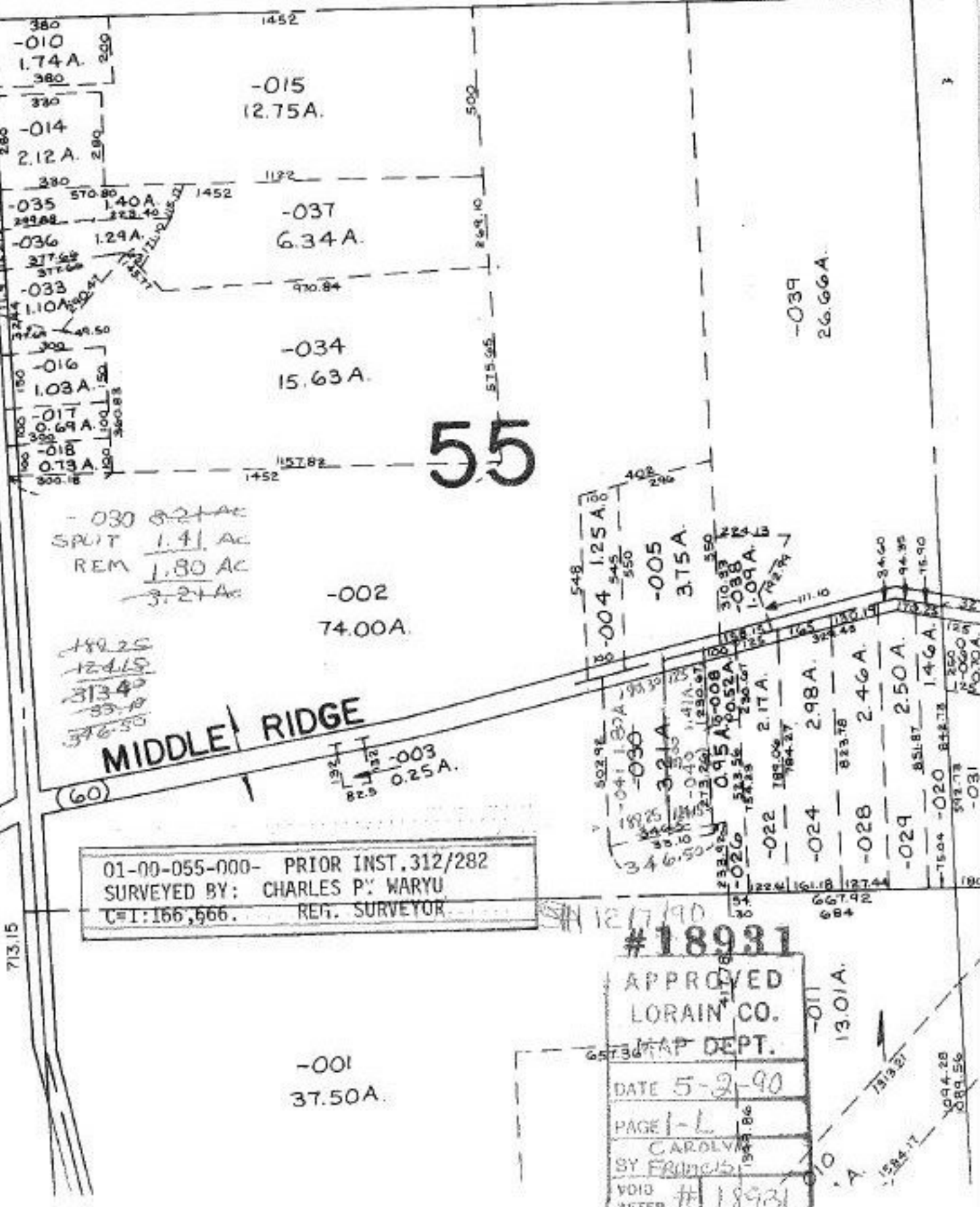


750.75 B  
RD. 500  
60

BAUMHART



55

- 030 3.24 AC  
 SPLIT 1.41 AC  
 REM 1.80 AC  
 3.24 AC

189.25  
 124.15  
 313.40  
 376.55

MIDDLE RIDGE

01-00-055-000- PRIOR INST. 312/282  
 SURVEYED BY: CHARLES P. WARYU  
 C#1:166,666. REG. SURVEYOR

-001  
37.50A.

#18931  
 APPROVED  
 LORAIN CO.  
 MAP DEPT.  
 DATE 5-2-90  
 PAGE 1-L  
 CAROLYN  
 BY FRANCIS  
 VOID  
 AFTER #18931

-011  
13.01A.

-020 2.50A.  
 -022 2.17A.  
 -024 2.98A.  
 -028 2.46A.  
 -029 2.50A.  
 -031 1.46A.

-004 1.25A.  
 -005 3.75A.

-039  
26.66A.

-002  
74.00A.

-037  
6.34A.

-034  
15.63A.

-015  
12.75A.

-010  
1.74A.

-014  
2.12A.

-035 1.40A.  
-036 1.29A.

-033 1.10A.

-016 1.03A.

-017 0.69A.  
-018 0.73A.

713.15

(60)

3