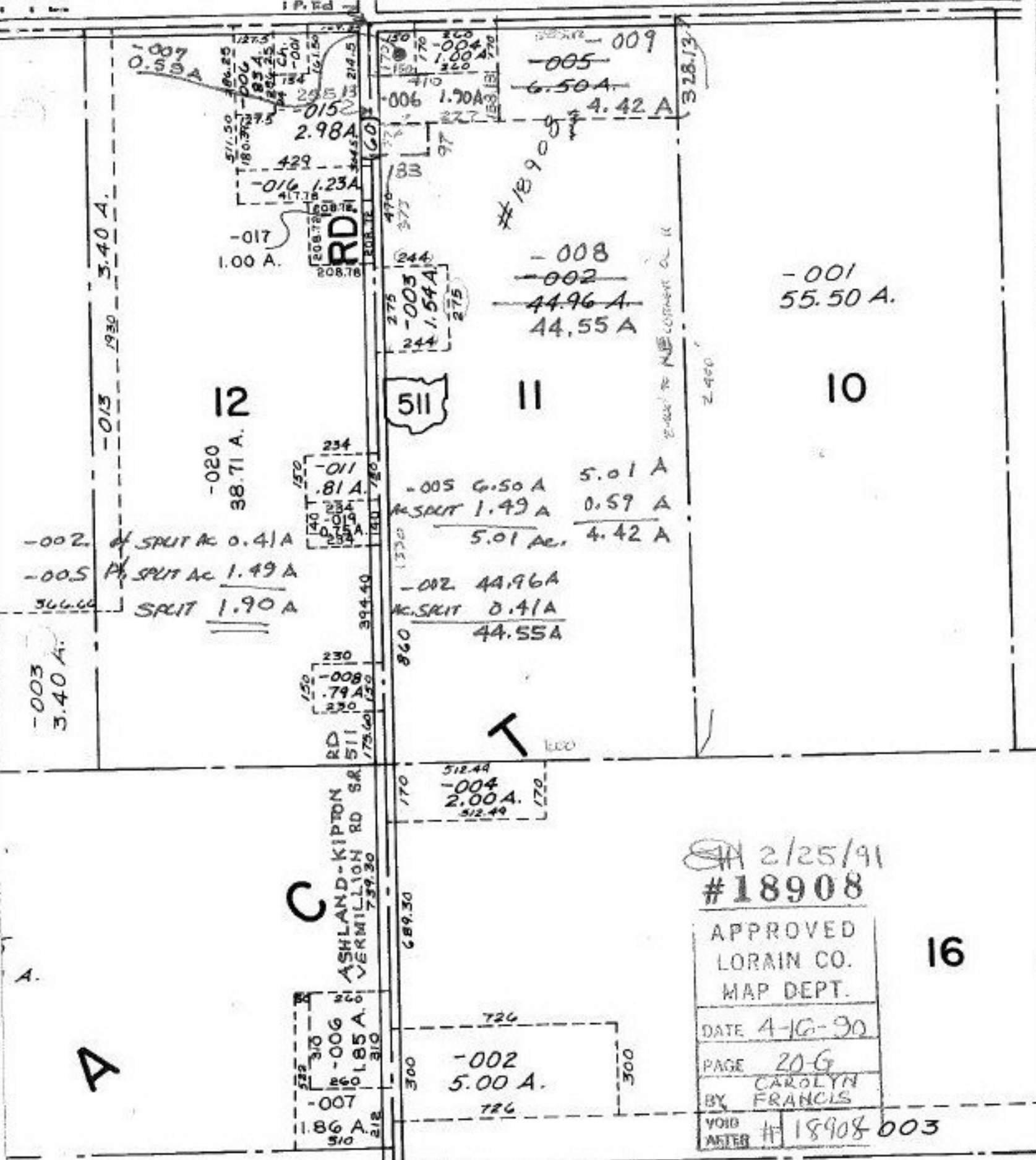


NEW-LONDON-LAFAYETTE RD S.R. 162

I.P. Rd



2/25/91
#18908

APPROVED
LORAIN CO.
MAP DEPT.

DATE 4-16-90

PAGE 20-G

BY CAROLYN
FRANCIS

VOID
AFTER # 18908 003

16

20-04-011-000- PRIOR INST. 1377/340 OR.260/307
SURVEYED BY: KS ASSOC. INC. C=1: INF.