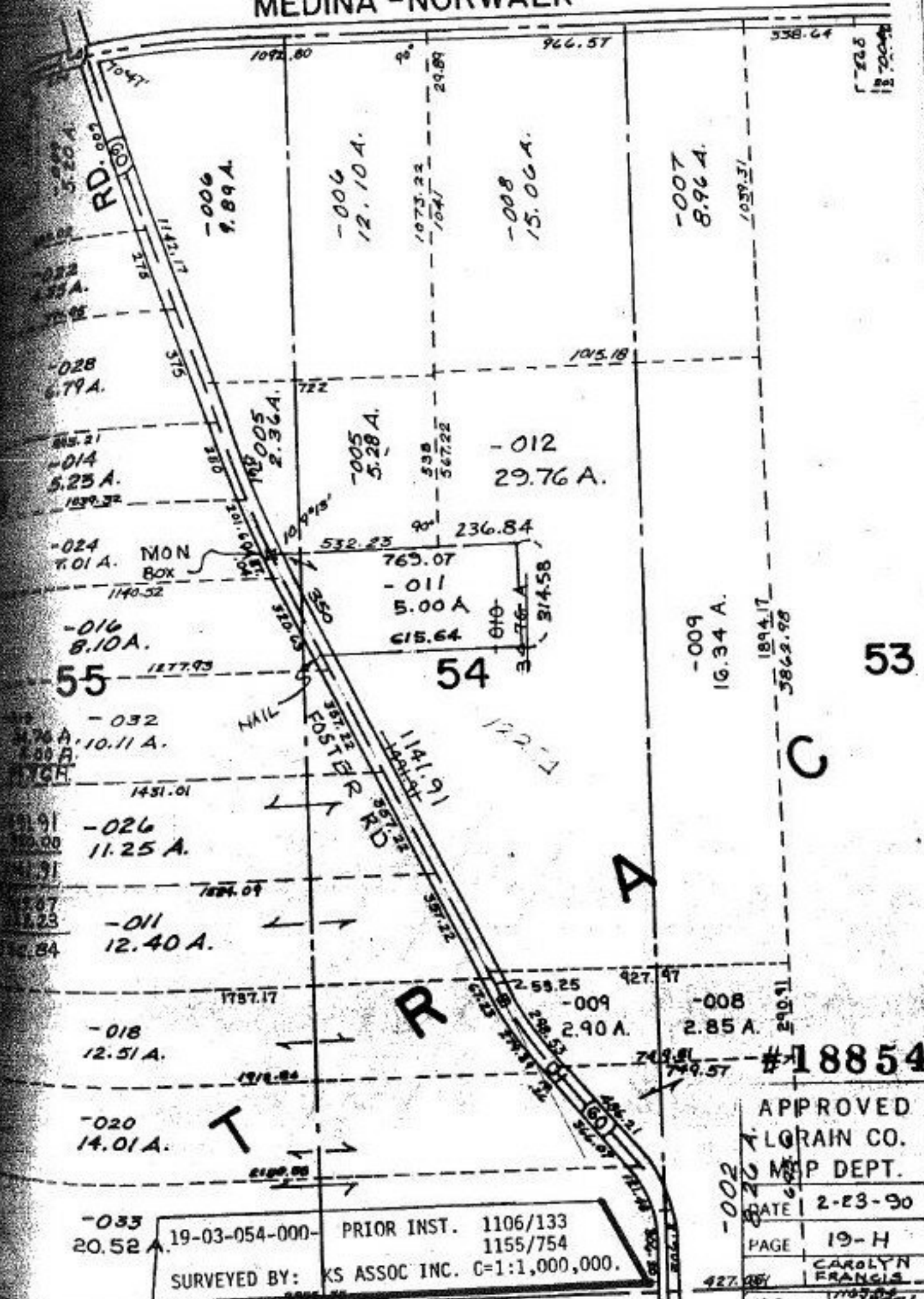


MEDINA - NORWALK

1000



#18854

APPROVED	
LORAIN CO. MAP DEPT.	
DATE	2-23-90
PAGE	19-H
CAROLYN FRANCIS	
VOID AFTER #	#18854 -011

19-03-054-000- PRIOR INST. 1106/133
 1155/754
 SURVEYED BY: KS ASSOC INC. C=1:1,000,000.