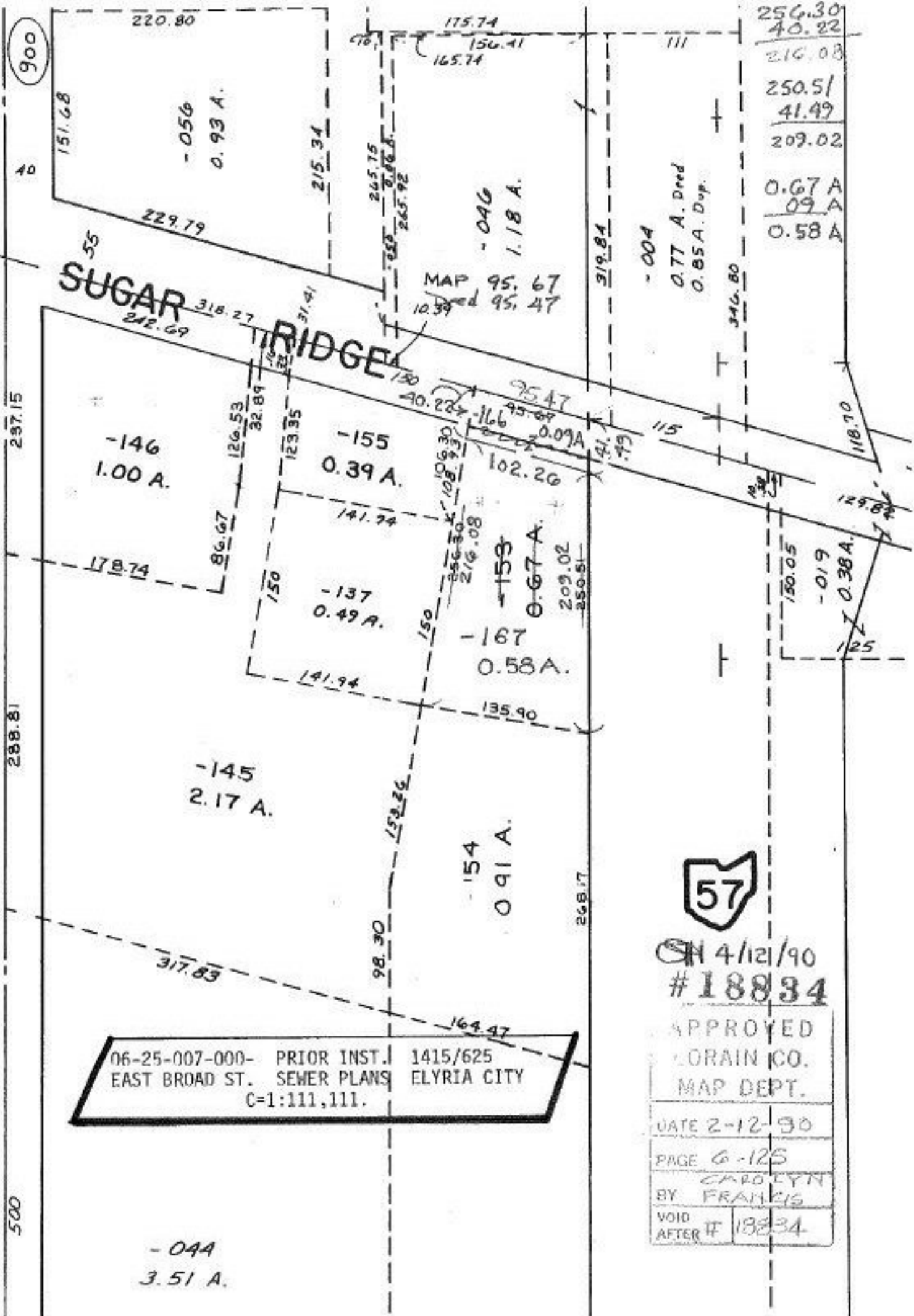


SEE 6-124



06-25-007-000- PRIOR INST. 1415/625  
 EAST BROAD ST. SEWER PLANS ELYRIA CITY  
 C=1:111,111.



ON 4/12/90  
 #18834

APPROVED  
 LORAIN CO.  
 MAP DEPT.

DATE 2-12-90

PAGE 6-125  
 BY CAROLYN  
 FRANKIS

VOID AFTER # 18834