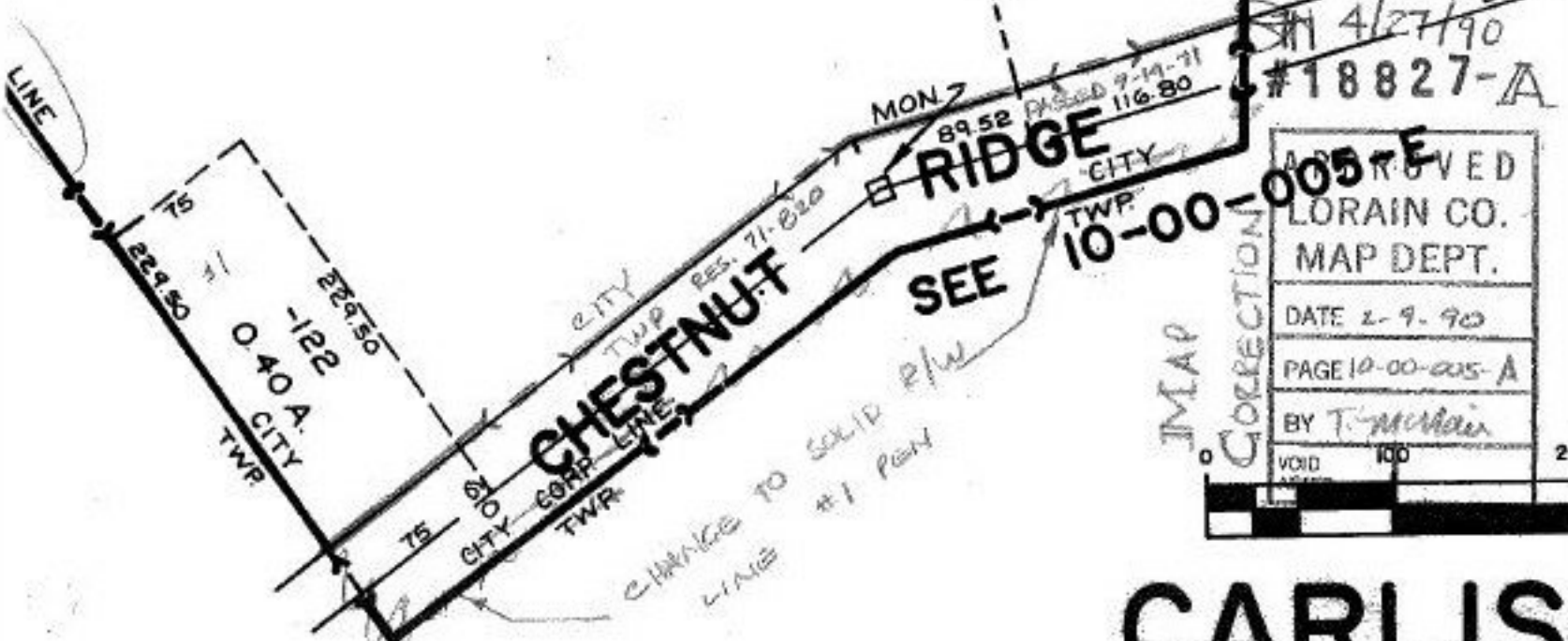


RE  
COMM.  
ORD. 71-169  
LINE  
CORP



ELYRIA 205 CITY TWP.

4/27/90  
#18827-A

APPROVED
LORAIN CO.
MAP DEPT.
DATE 2-9-90
PAGE 10-00-005-A
BY T. McMan
VOID 100 20

**CARLIS**  
SCALE 1" = 1'

1/2 N.W. 1/4 SEC. 5