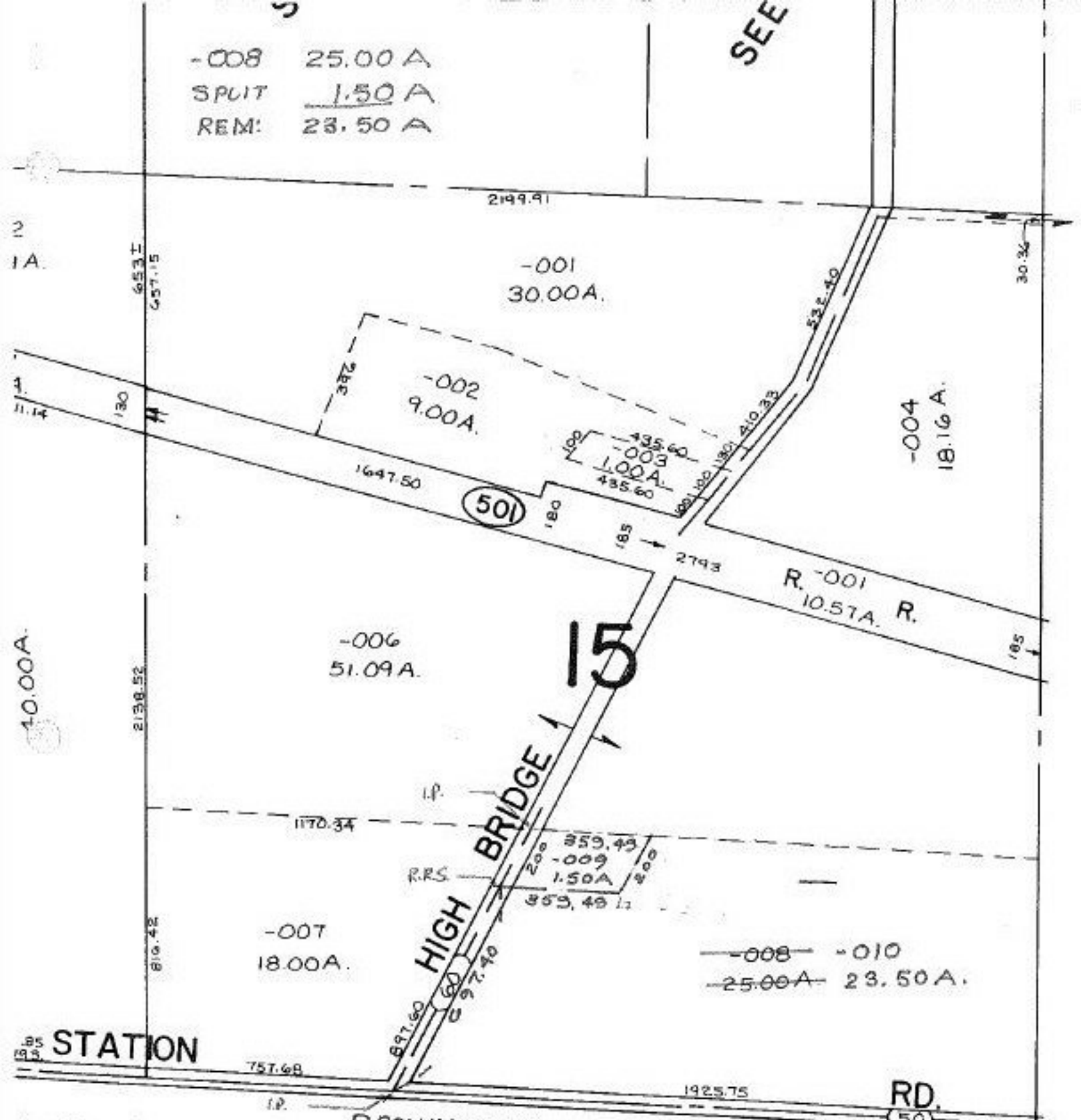


-008 25.00 A  
 SPLIT 1.50 A  
 REM: 23.50 A

SEE

SEE



10.00A

2  
1A

4  
11.14

STATION

I-E

BROWNHELM STATION RD. 4/16/90

#18823

01-00-015-000- PRIOR INST. 757/410  
 1368/920  
 SURVEYED BY: KS ASSOC. DAVID L. ELWELL  
 C=1: INF. REG. SURVEYOR.

APPROVED  
 LORAIN CO.  
 MAP DEPT.  
 DATE 1-31-90  
 PAGE 1-A  
 BY CAROLYN FRANCIS  
 VOID AFTER # 18823