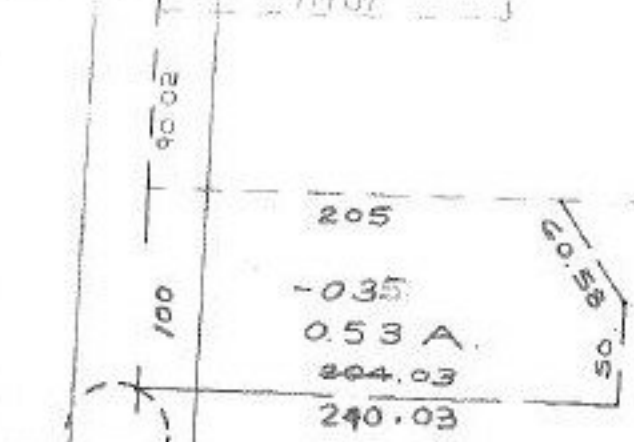


023
4.01 A

1060 48



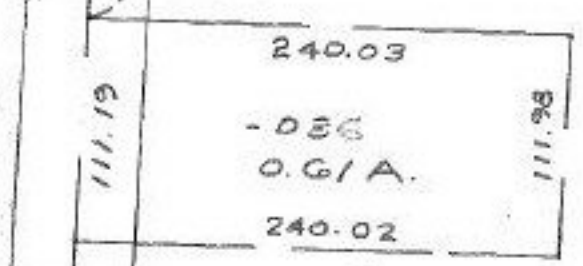
-019 18.47 A
 SUT (1) 0.53 A
 17.94 A
 SUT (2) 0.61 A
 REM: 17.33 A

OAK POINT RD
 125
 430
 150
 112.03

-037
 17.33 A

104

~~019~~
~~18.47 A~~



4/9/90
 #18804

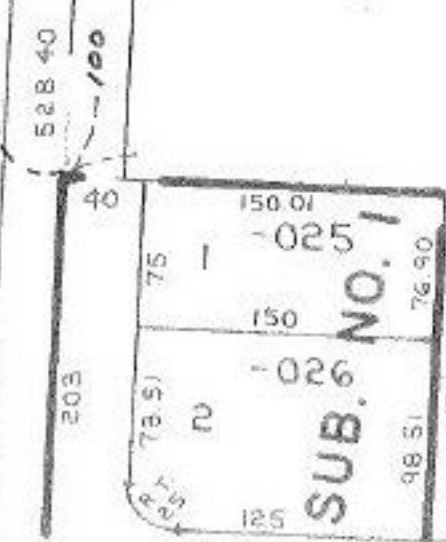
APPROVED
 LORAIN CO.
 MAP DEPT.

DATE 1-16-90

PAGE 2-03-006 A

BY CAROLYN FRANCIS

VOID AFTER # 18804



02-03-006-104- PRIOR INST. OF 245/662
 SURVEYED BY: PAUL R. SHULSKY - Reg. Surv
 (1) C=1: 114,111. (2) C=1: 209,000.

60 N. MAYFLOWER 196.93 63.16 202.52 7004 74
 125 202.76 63.16 197.23