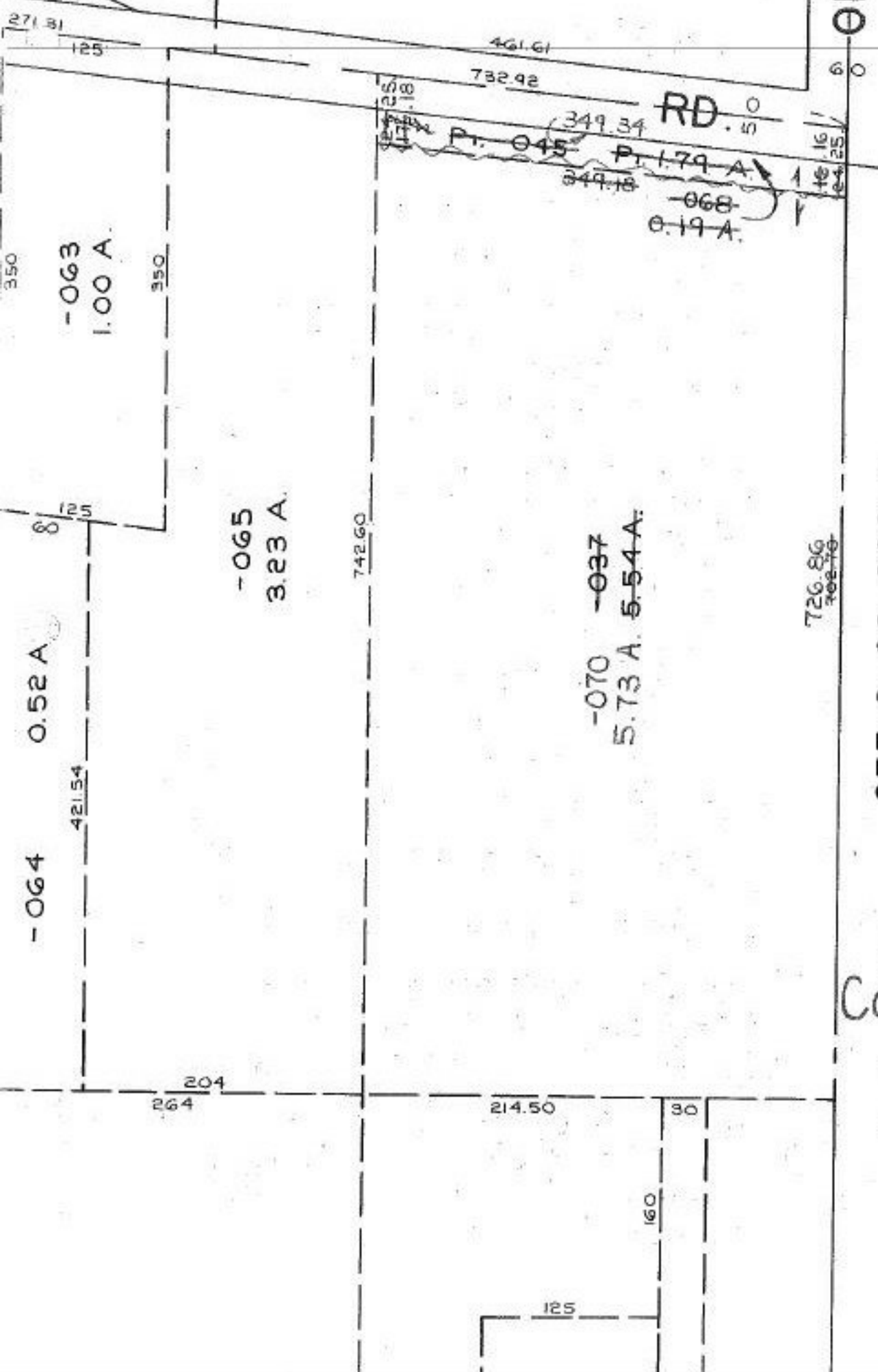


P. - 069
P. 1.60 A.



OBEF

SEE 9-00-098-A

DA 1/5/90
COMBINATION
#18794-A

APPROVED LORAIN CO. MAP DEPT.	
DATE 12/27/89	
PAGE 9-00-097-B	
BY T. HOLLIS	
VOID AFTER	18794-A