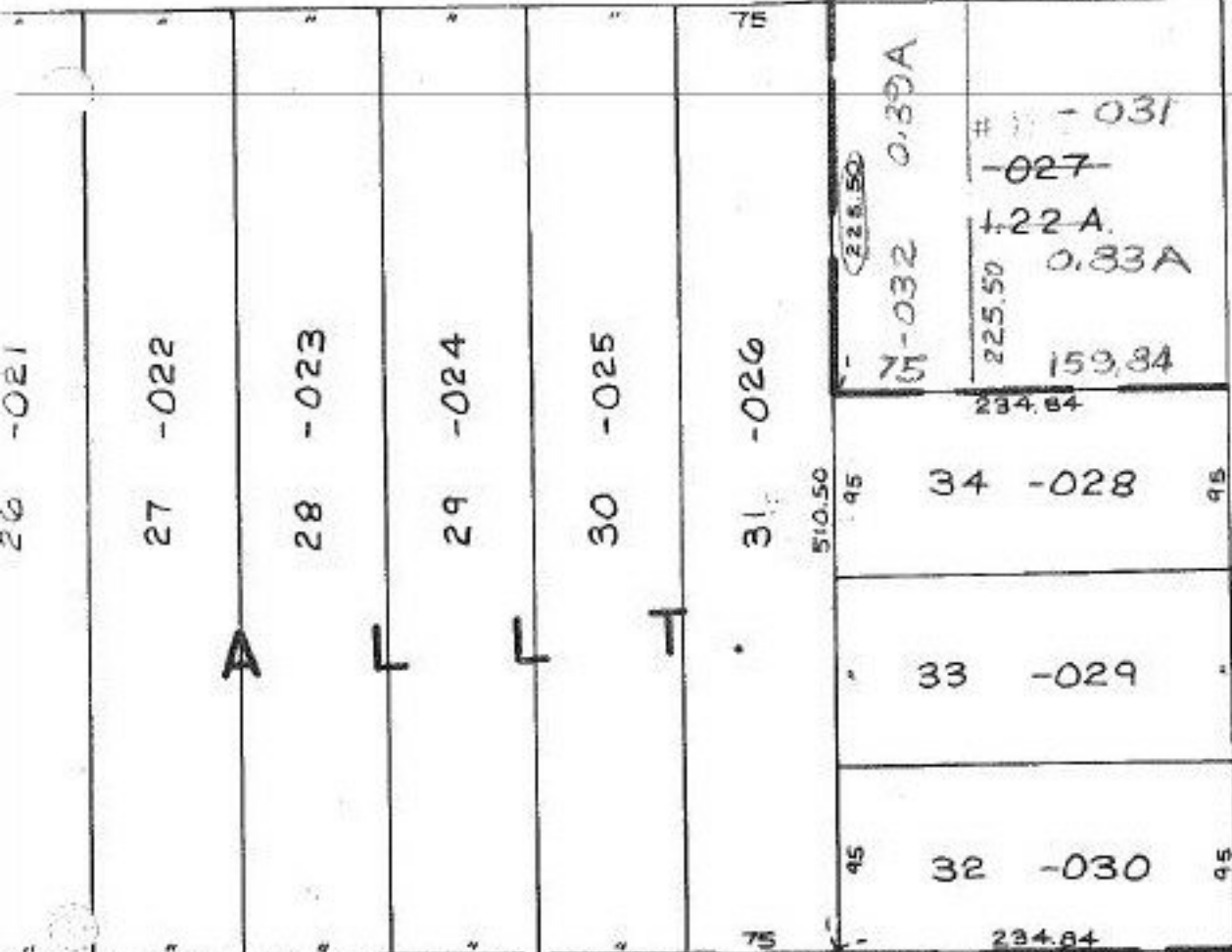


NOVAK

RD.



ST. 8

510.50

230

ELM

-027 1.22 A 75.00  
 SPLIT 0.83 A 159.84  
 REM: 0.39 A 234.84

11-00-081-101- PRIOR INST. OR.170/924  
 SURVEYED BY: KS ASSOC. C-1:INF.

12/22/89  
 #18770

APPROVED  
 LORAIN CO.  
 MAP DEPT.  
 DATE 12-14-89  
 PAGE 11-00-081  
 BY CAROLYN FRANCIS  
 VOID AFTER # 18770

403.27