

-048  
25.01 Ac.

254

RD. 227.11

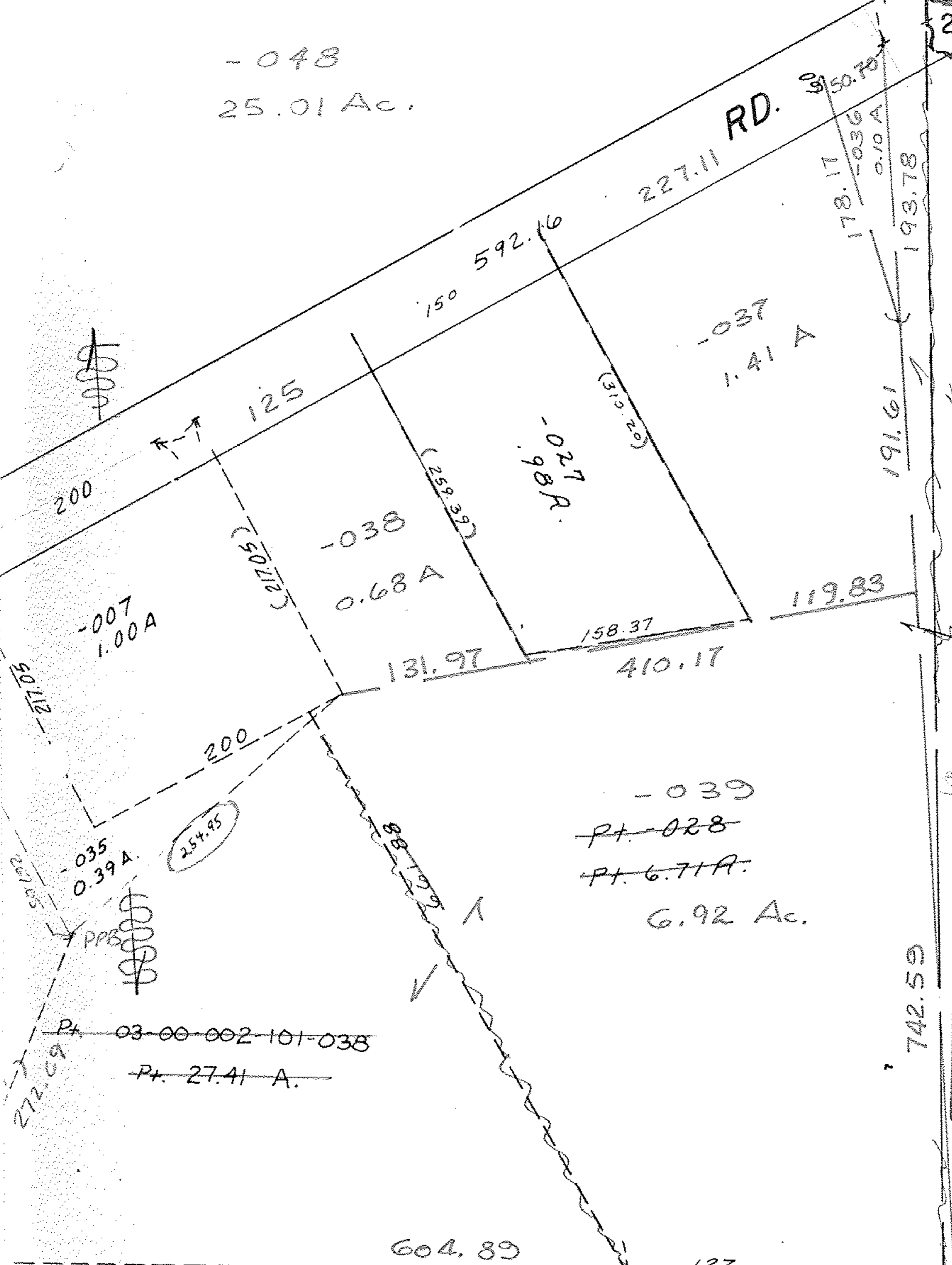
-028  
A SPLIT

B SPLIT

C SPLIT  
REM.

03-00-002-101-  
(-028)

SPLIT - D



-039  
~~Pt. -028~~  
~~Pt. 6.71 A.~~  
6.92 Ac.

Pt. 03-00-002-101-038  
~~Pt. 27.41 A.~~

1/11/91  
#18756

APPROVED  
LORAIN CO.  
MAP DEPT.

DATE 4-10-90

PAGE 3-00-002A

CAROLYN  
BY FRANCIS

VOID  
AFTER # 18756

#1875

APPROVED  
LORAIN CO.  
MAP DEPT.

DATE 4-10-

PAGE 3-00-002

CAROLYN  
BY FRANCIS

VOID  
AFTER # 1875

03-00-002-102- PRIOR INST. 1374/662  
C=1: 333,333. (2) 1:111,111. (3) 1:25,641 (4) 1:76,923  
SURVEYED BY: **William B. BARTON Reg. Surv.**  
~~Pt. 03-00-001-200-007~~

Pt. 26.83A.

249.08  
246.37

91°18'  
131.45